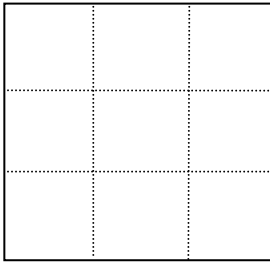


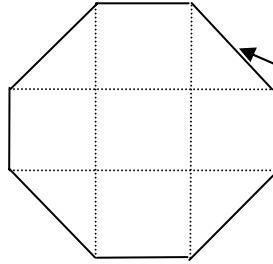
# "Box" Card

## Bottom:

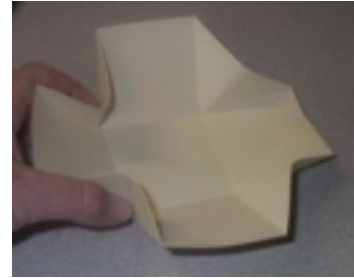
1. Start with 7 ½ x 7 ½ inch square
2. Score at 2 ½ inch intervals in both directions as shown below. Hint, score at the 2 ½" mark and then the 5" mark



3. Cut off the corners as shown

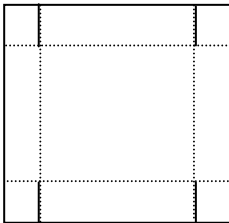


4. Stamp both sides... one side is the "card" you open up to and the other will be the exterior of the box
5. Fold in the cut corners as shown below



## Box Top

1. For the box top, cut a square 4 ¼" inches by 4 ¼"
2. Score in from each side 7/8"
3. Make 4 cuts as shown (just "outside" the score lines). Fold in the square flaps and glue inside the lid



## Sample



Finished project

Amy Celona, Stampin' Up! Demonstrator Manager  
Impress Me! Team

1115 Thunder Hill Road, Lincoln University, PA 19352

[amy@ustamp4fun.com](mailto:amy@ustamp4fun.com) website: [www.ustamp4fun.com](http://www.ustamp4fun.com) 610-255-1660