

...ea-  
dges.  
...s together,  
...on sleeve  
...from one  
...rip. Stitch  
...previous  
...s seam to-

... (6 mm) on  
...ong edge of  
...s. Slip-stitch

Bring folded edges of lap together. Stitch across upper end diagonally, as shown.

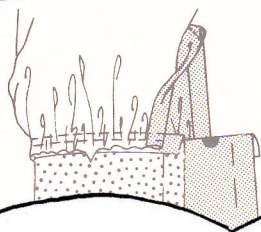
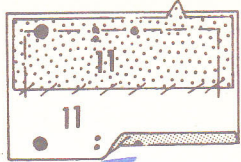
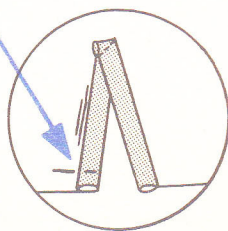
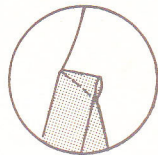
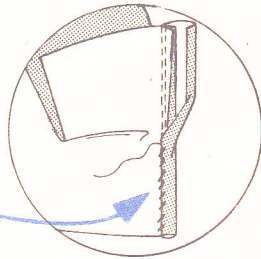
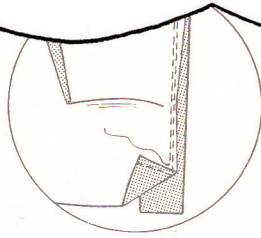
Turn in front lap. Baste across lower edge.

Stitch sleeve seam.

Gather lower edge of sleeve, as shown

RFACING 11  
...de of CUFF  
...visibly along  
...urn in seam  
...on long un-  
...press.

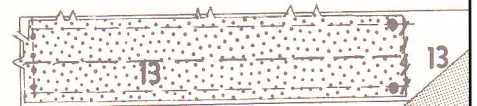
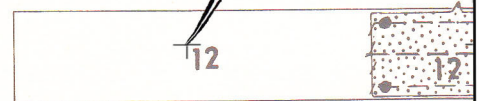
...e between  
...seam-  
...ing



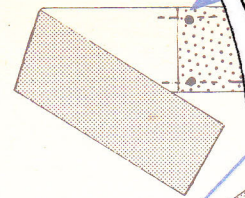
...ing large ●  
...seam. Adjust eas  
...Stitch again 1/4" (6 m  
...away in seam allowan  
...Trim close to stitch  
...Press. Turn seam tow  
...sleeve.

### STEP 7 - WAISTBAND

Baste INTERFACING 12 to wrong side of RIGHT 12 and BACK WAISTBAND along foldline and inner line on notched ends. Finish stitching on ends.



Reinforce waistband through large ●'s as



Stitch right front waistband leaving opening as shown.