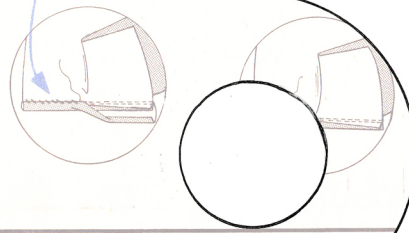
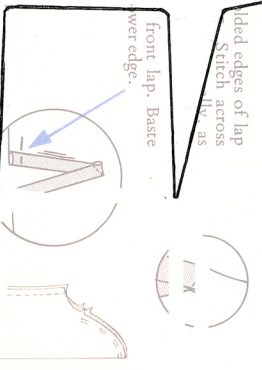


Cut on solid outline
 (See score guide for scoring)
 Works with 1 1/4 inch
 circle punch or larger

1. In 1/4" (6 mm) or
 remaining long edge c'
 p; press. Slip-stitch
 seam.



folded edges of lap
 Stitch across
 the waist

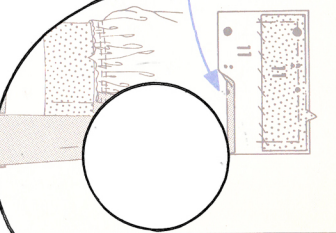


Front lap. Baste
 lower edge.



5. CUFF

6. INTERFACING 1
 wrong side of CUF
 1. Sew invisibly alo
 foldline. Turn in sea
 allowance on long t
 notched edge; press.

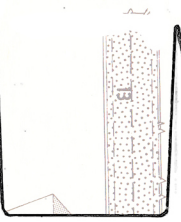


STEP 7 - WAIST BAND

Baste INTERFACING 12 and INTERFACING 13 to wrong side of RIGHT FRONT WAISTBAND 12 and BACK WAISTBAND 13. Sew along foldline; and inner edge. Stitch line on notched ends. Trim interfacing on notched ends. Trim interfacing on notched ends.



12



Reinfor waistband through

