



## INSTRUCTIONS FOR...

# Opening Teapot with Optional Photo Frames + Display Box



**STEP 1)** Using tracing paper and/or graphite paper etc, copy the outlines of the templates onto the card of your choice and cut out the pieces. Cut along all solid lines (the dotted lines are fold lines – score along them to make folding the pieces into shape easier).

If you decorate the teapot before making it up, remember to glue the handle pieces on the sides first (Step 4).

**STEP 2)** To begin, make the stand for the teapot. Fold all the sides down and glue the triangular tabs to the inside of the next side.

**STEP 3)** Glue the stand centrally to the underside of the “base” section.

**STEP 4)** Using the guidelines marked on the templates, glue the two handle pieces onto the outside of the sides.

These need to be accurate to the guidelines to ensure that the two handles meet when you glue them together later.

**STEP 5)** To make a teapot with photo frames, first use the acetate template to cut the acetate panels. Then glue the acetate panels to the inside of the photo frames.

**Note:** One side of each photo frame does not have a tab – this is where the photo will be inserted later. Ensure the open sides of the frames **DO NOT** face the handle or spout positions or this will prevent the insertion of photos.

Fold all three tabs on each photo frame inwards and glue these to the sides of the teapot.

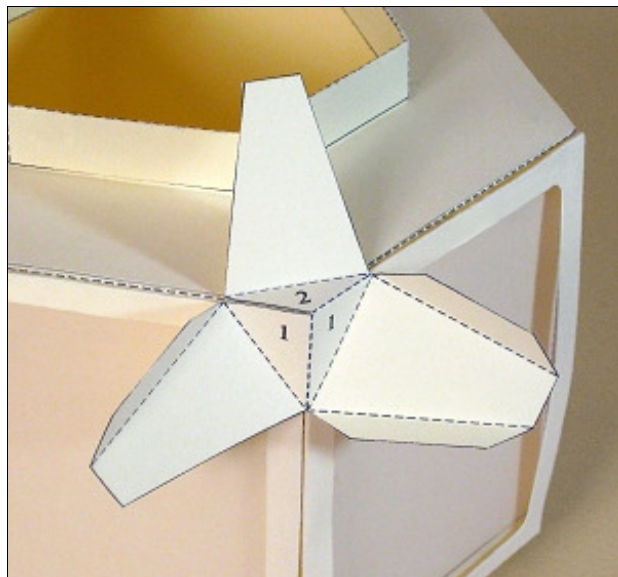


**STEP 6)** Now fold the “base” tabs (labeled “A”) upwards and glue them to the inside of the “side” sections, as marked on the templates. When both sides are attached to the base, glue them together using the long tabs on each end and glue the two handle pieces together.

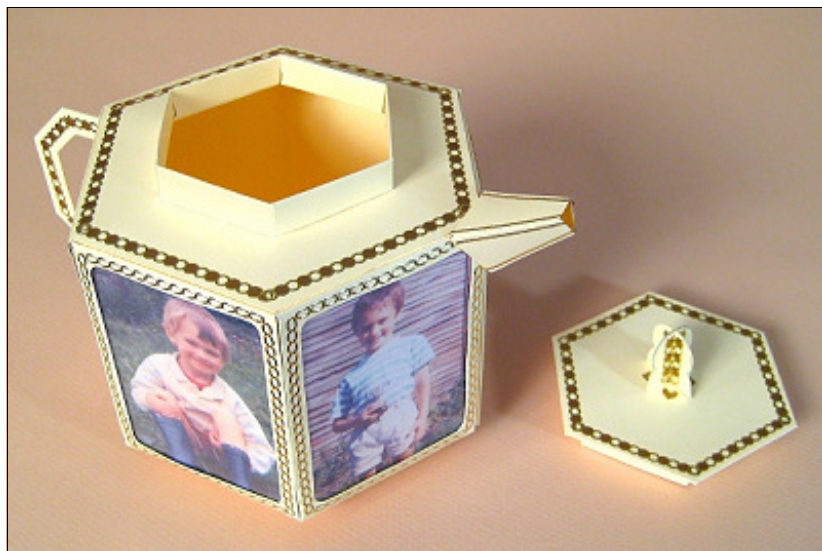
**STEP 7)** Next, cut out the central hole in the “top” section. Glue the top onto the “side” section tabs (labeled “B”). When all side tabs are secured, fold the central top tabs (labeled “C”) upwards.

**STEP 8)** Now glue the “top rim” in place. Starting with the end with the small tab, glue the rim to the outside of the “C” tabs. Glue all the way around and enclose the small tab. Then fold the remaining larger tabs of the rim inside and glue flat in place forming the double thickness rim.

**STEP 9)** Next, make the spout for the teapot. (**Note:** the two triangular parts labeled “1” are identical. Triangle “2” is different). Glue the two triangles labeled “1” to the front corner of the teapot opposite the handle. Refer to the guidelines on the side templates and the photo to help you. Then fold the triangular part labeled “2” down onto the top of the teapot and glue in place. Next, fold the three main pieces of the spout inwards and glue the tabs inside.



**STEP 10)** To make the teapot lid, first cut the slot for the lid handle. Then fold the labeled “edges” underneath the lid and glue flat in place. Then fold the labeled “sides” downwards and glue the small unlabeled tabs to the inside of the next side. Lastly, fold the labeled “tabs” inside and glue flat to the sides, creating a double thickness side.



**STEP 11)** To complete the teapot, take two “extra handle pieces” and fold each of them down the middle. Glue half of one to half of the other, matching the edges. Glue these to one side of the main handle piece. Repeat with the other two extra handle pieces. Now push the tab through the slot in the lid, fold over and glue in place.

**Note:** If the photos are not going to be removed, glue the open sides of the frames to the teapot. This creates a neater finish.

**YOUR TEAPOT IS NOW COMPLETE!**

## **DISPLAY BOX**

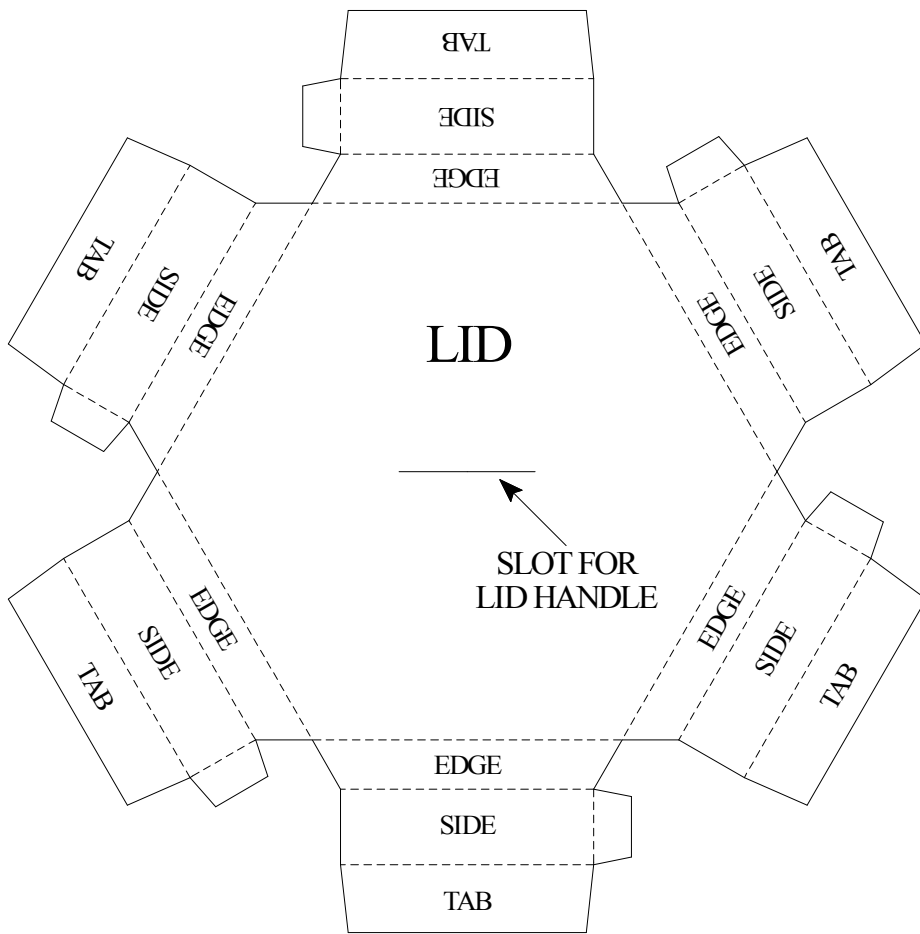
**STEP 1)** Cut out the pieces for the display box using the templates provided. Cut along all solid lines (the dotted lines are fold lines – score along them to make folding the display box into shape easier).

**STEP 2)** Cut your acetate panels using the acetate template and stick them onto the inside of the box sides. Glue each side tab to the inside of the adjacent side to create a box shape. Fold the top four tabs inwards and glue them flat, covering the top edges of the acetate.

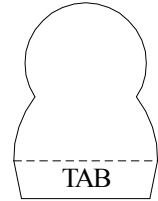
**STEP 3)** Take the base and fold all four tabs downwards. Fit this into one end of the box, gluing the tabs to the sides. This should create a raised platform to better display your teapot.

**STEP 4)** To create the lid, fold all four labeled sides downwards, gluing the small tabs to the inside of the adjacent side. Now fold the four large labeled tabs inside the lid and glue in place.

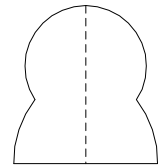
# TEMPLATES FOR TEAPOT



## LID HANDLE

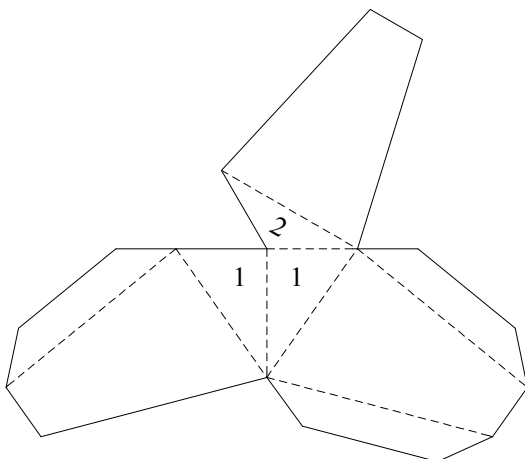


MAIN HANDLE PIECE (CUT 1)

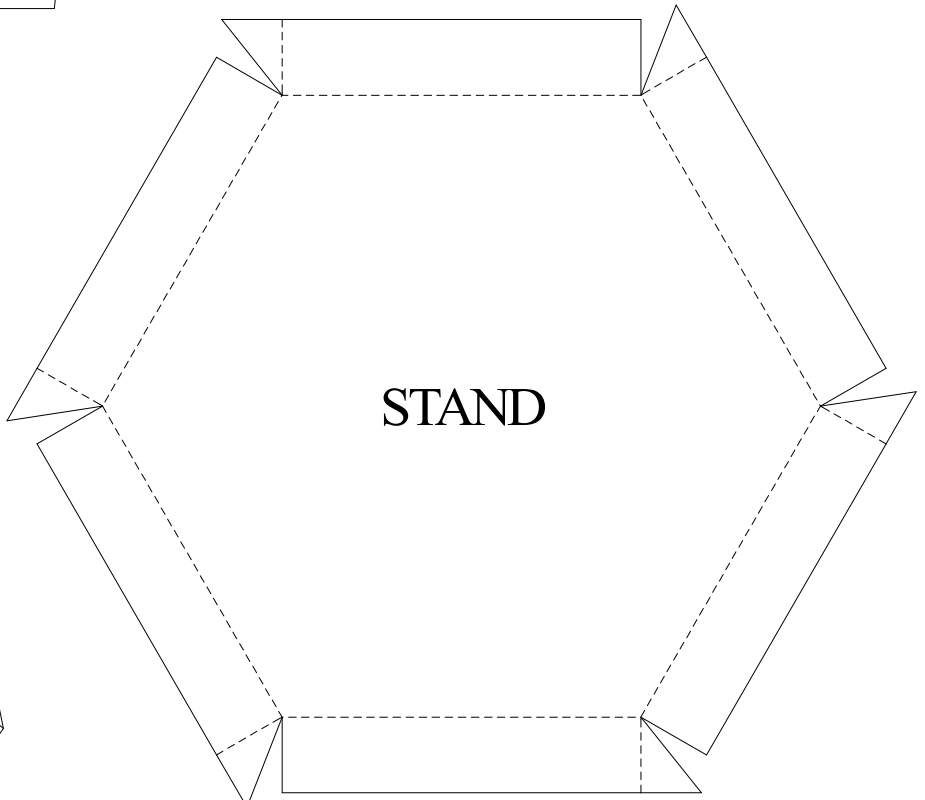


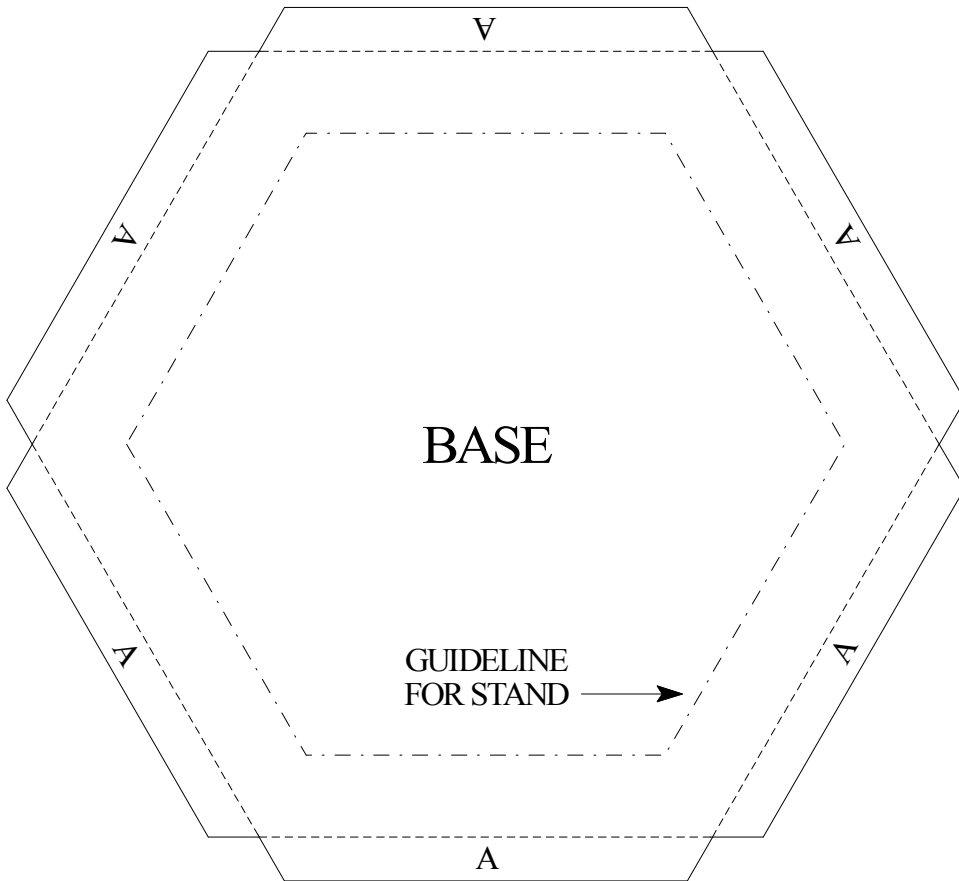
EXTRA HANDLE PIECES (CUT 4)

## SPOUT

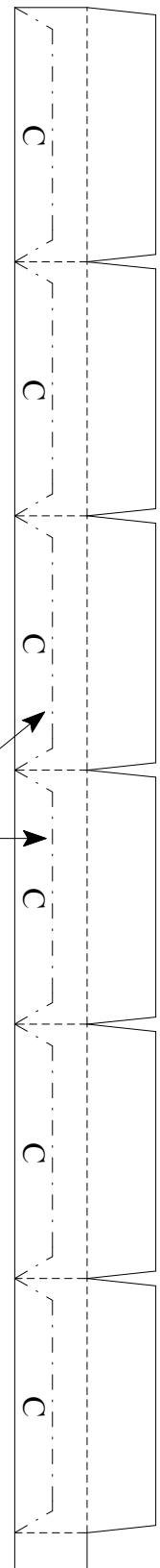


## STAND

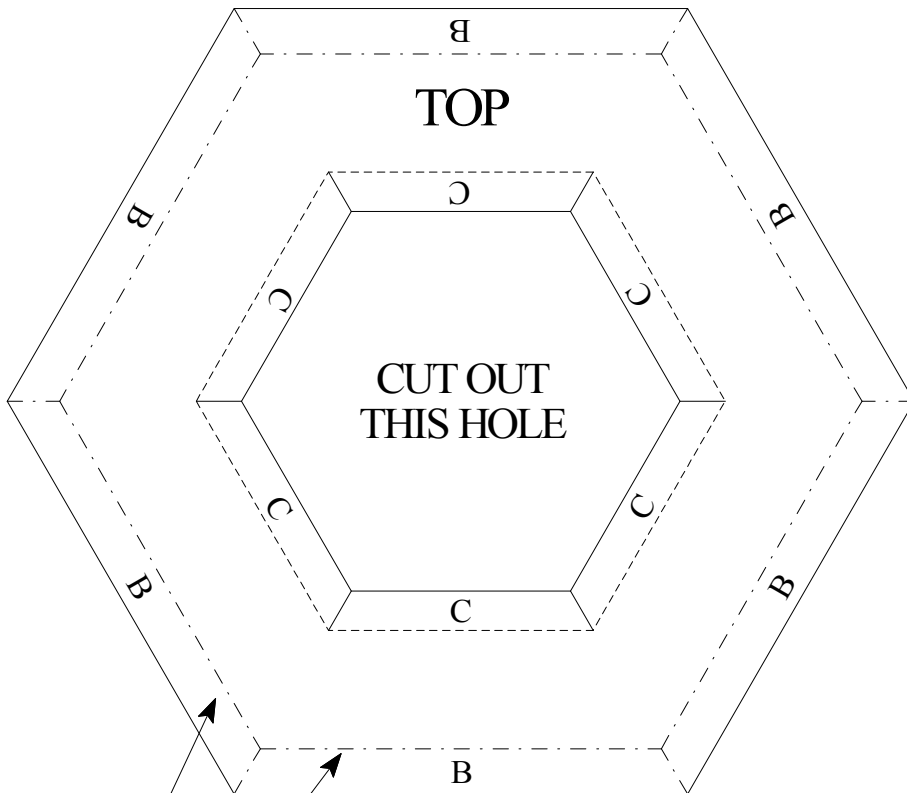




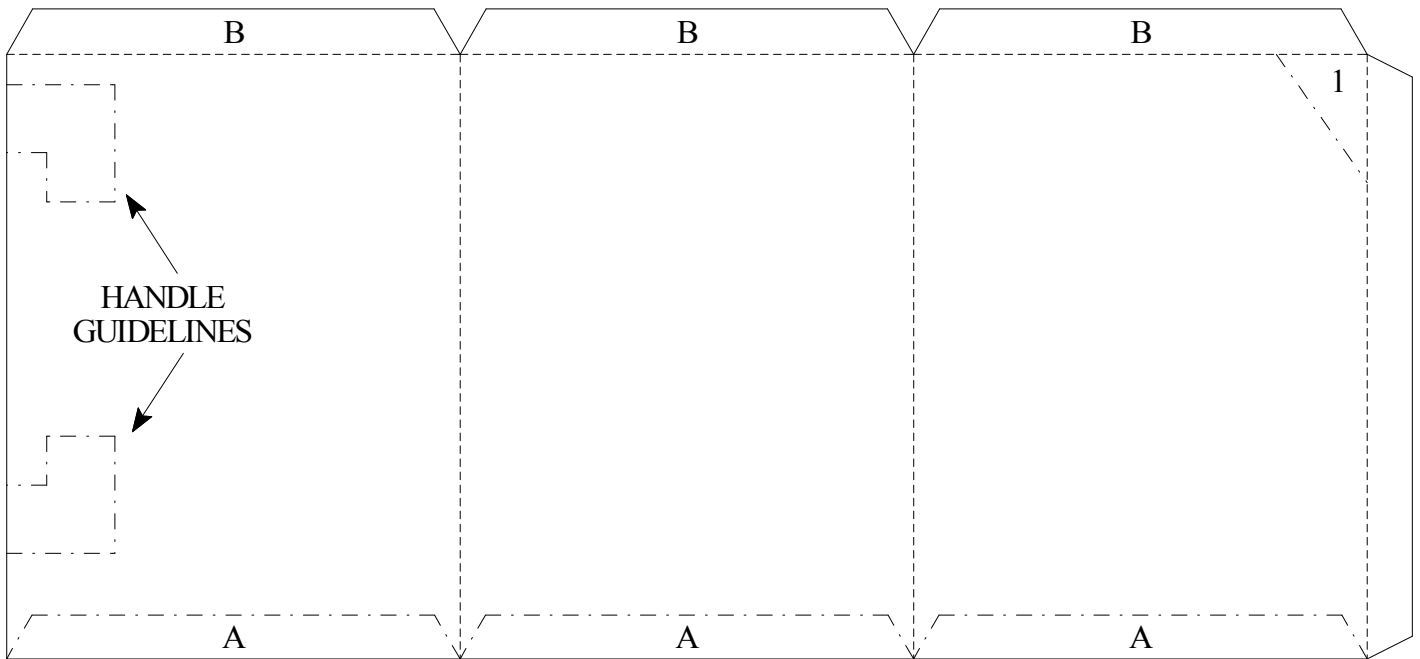
GUIDELINES FOR "TOP" SECTION "C" TABS



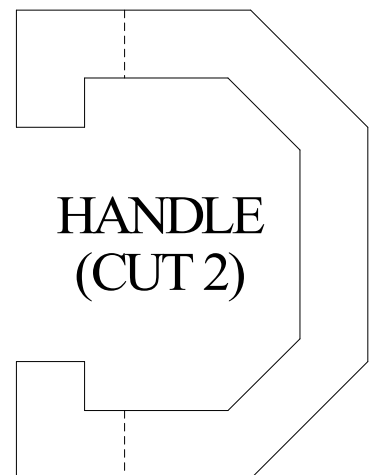
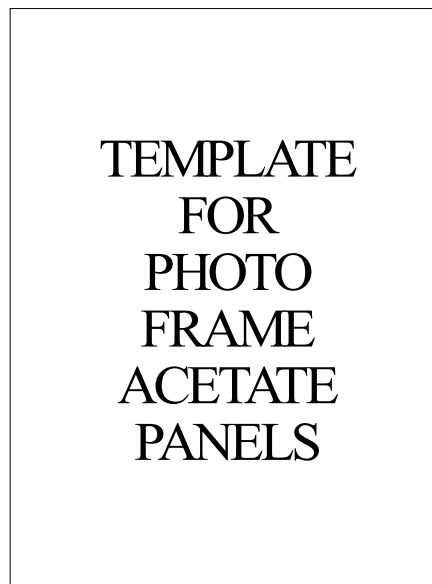
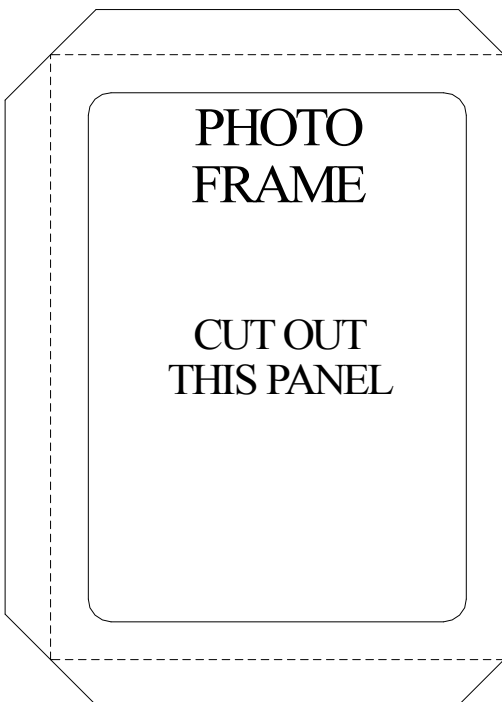
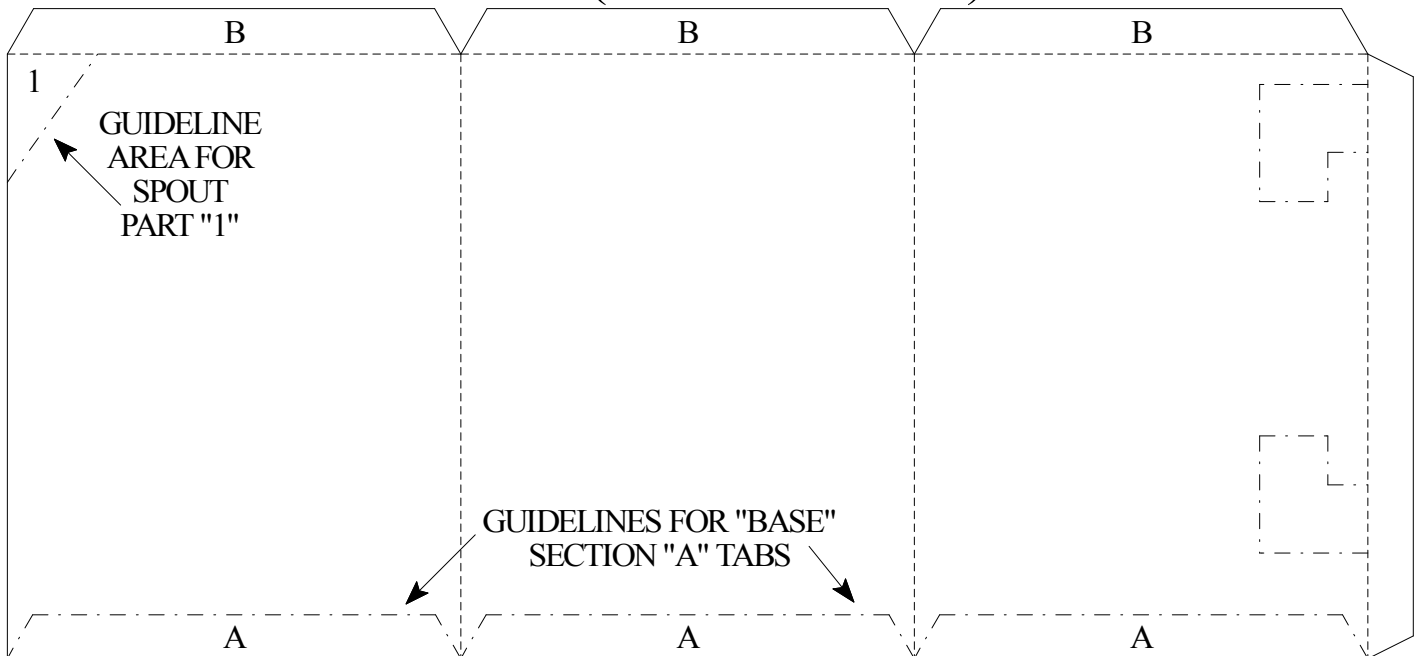
TOP RIM



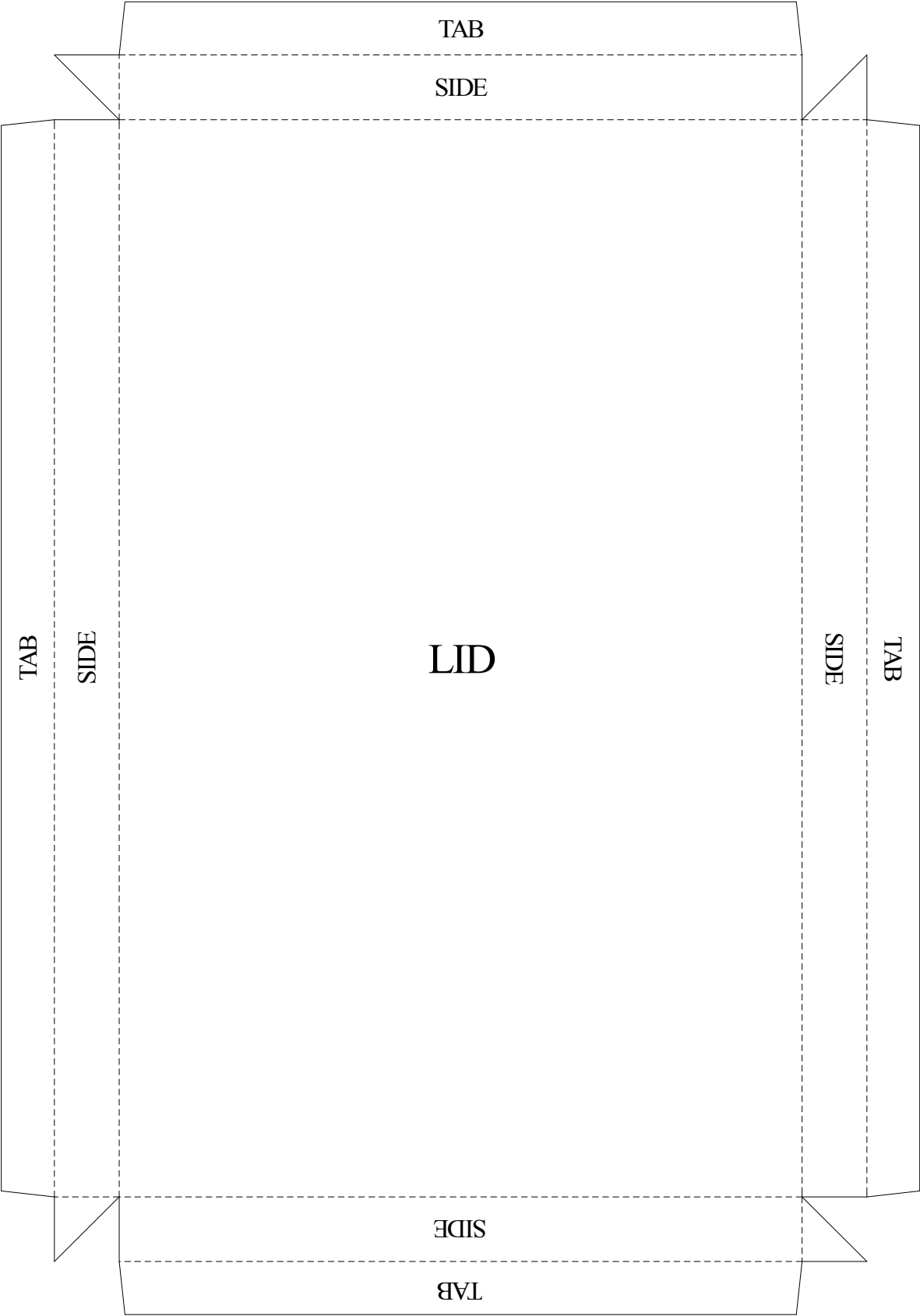
GUIDELINES FOR "SIDE" SECTION "B" TABS

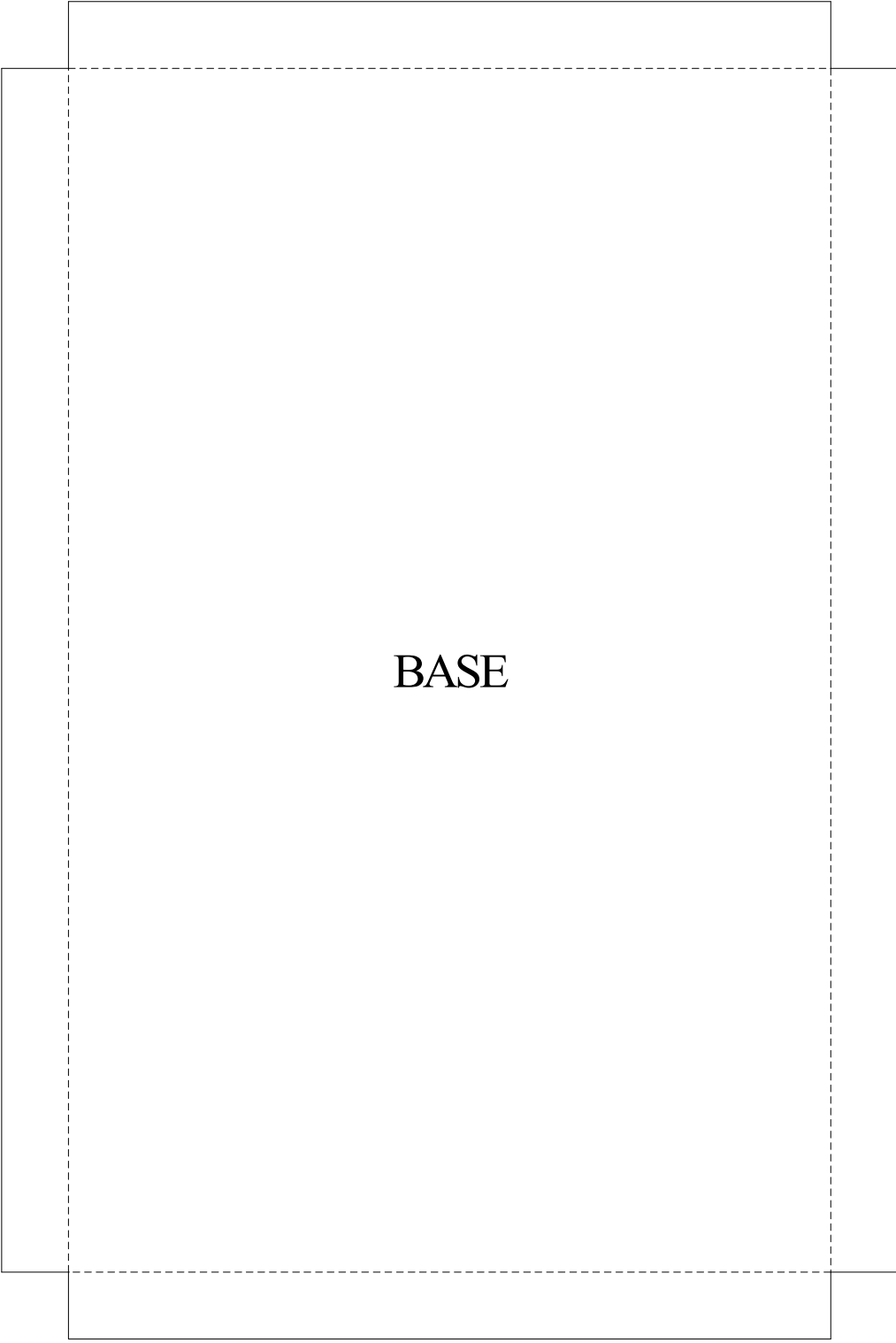


**SIDES (CUT 1 OF EACH)**



# DISPLAY BOX TEMPLATES





CUT OUT  
THIS PANEL

GLUE THIS TAB TO THE INSIDE OF THE NEXT SIDE

LONG SIDE (CUT 2)

TEMPLATE FOR  
SHORT SIDE  
ACETATE PANEL  
(CUT 2)



GLUE THIS TAB TO THE INSIDE OF THE NEXT SIDE

CUT OUT  
THIS PANEL

SHORT SIDE (CUT 2)

TEMPLATE FOR  
LONG SIDE  
ACETATE PANEL  
(CUT 2)

# CARD CAROUSEL™

Card Crafting Templates - Something Different!



Thank you for downloading this product.  
We hope you enjoy using it.

To see the full range, please visit:  
[www.cardcarousel.co.uk](http://www.cardcarousel.co.uk)



If you have any problems or questions  
regarding this item or any of our other  
products, please feel free to contact us.  
E-mail: [message@cardcarousel.co.uk](mailto:message@cardcarousel.co.uk)

