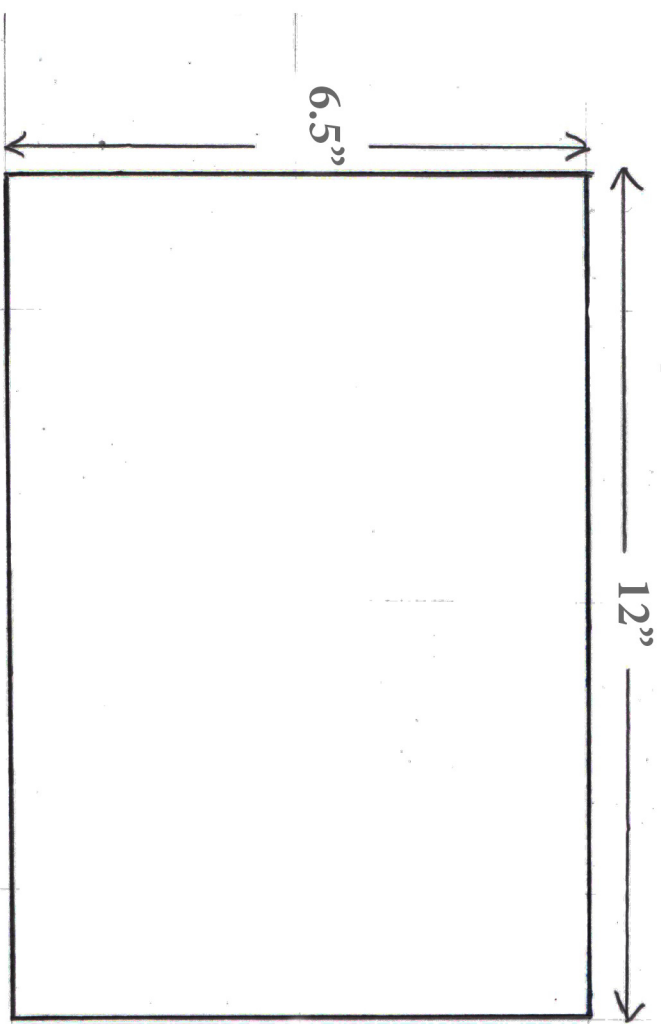
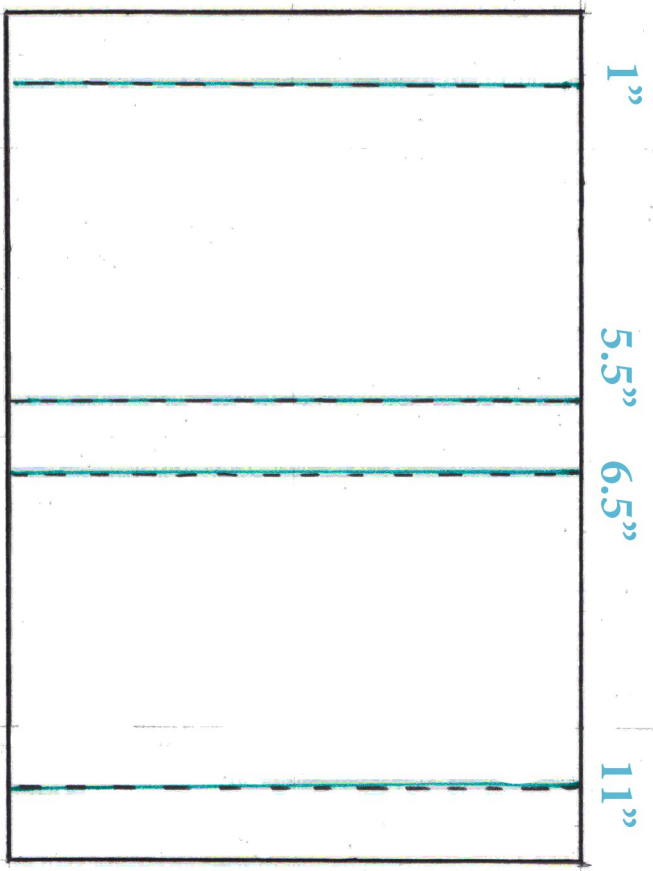


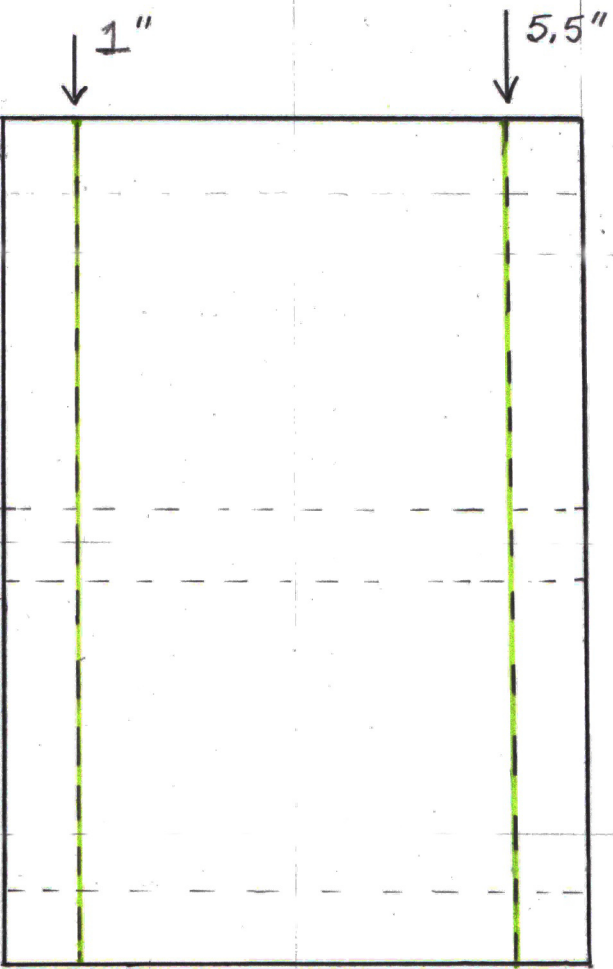
Box for 4 2/8 inch cards & envelopes
(measures 4.5 inches square)



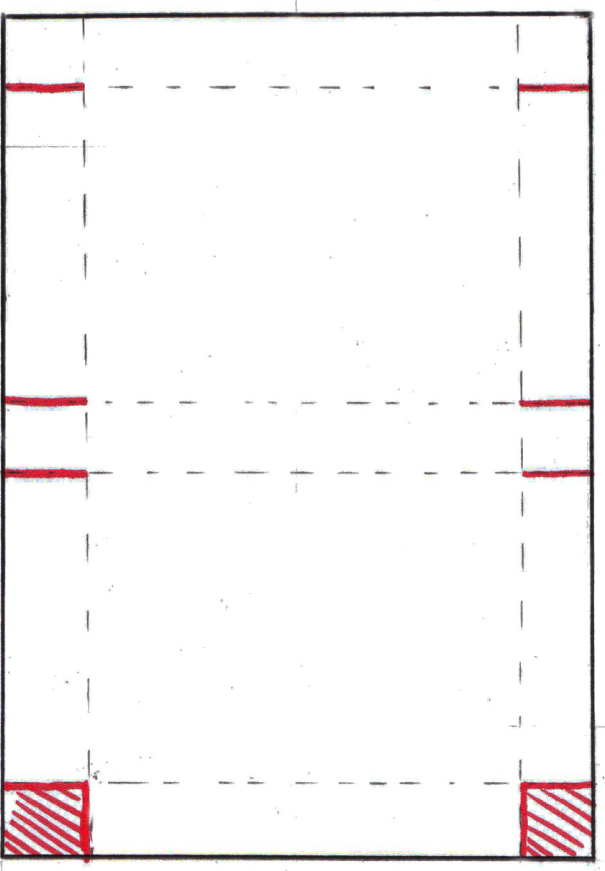
Step 1) Start with a piece of 12 inch by 6 1/2 inch cardstock



Step 1) Score it at these marks: 1 inch, 5 1/2 inch, 6 1/2 inch, and 11 inch



Step 3) Turn & score at the 1 inch & 5.5 inch mark



Step 4) Cut slits (red lines) & cut away sections (red scored boxes)