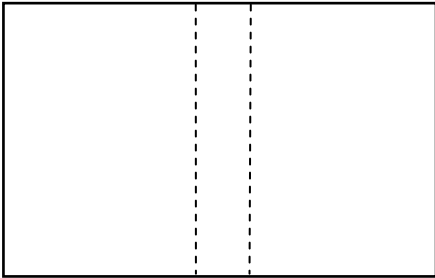


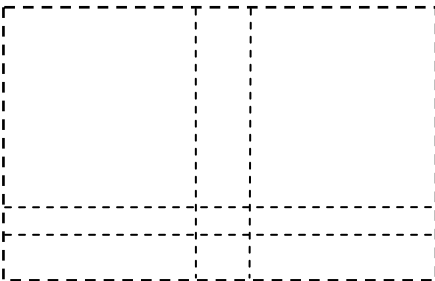
## Stationary Box Holder for 10 Cards and Envelopes

Take an 8.5" x 11" piece of card stock

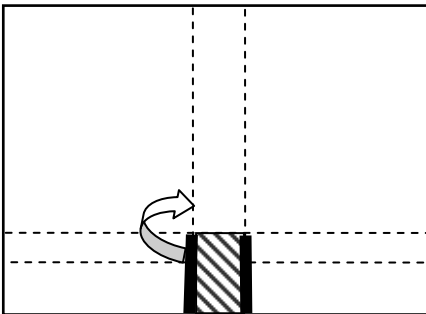
Score at 5" and 6" - the middle of the long side



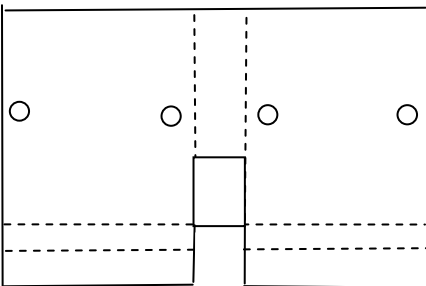
Score at 2" and 2.5" at the bottom



Cut along the score marks at the bottom up the top line at 2.5". Fold up this small flap and glue down.



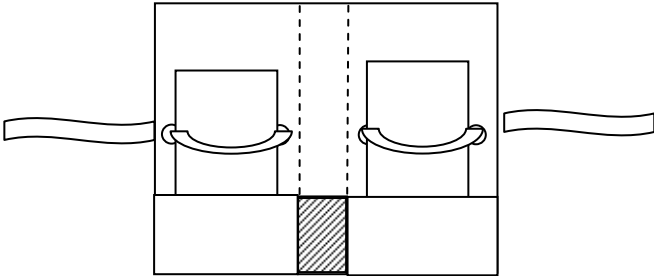
Put a 1/4" hole at 3" from the top and 1/4" from the outside edges and from the inside scores. To be sure that the cards fit, put a card in each pocket before punching the holes.



Put on the front a matching design for the stationary

Run a ribbon thru the holes starting from the right side hole on the front and then go to the next hole weaving in and out.

Place the card and envelopes (five of each on each side) under the ribbon



Fold up the bottoms. Fold together and tie ribbon

