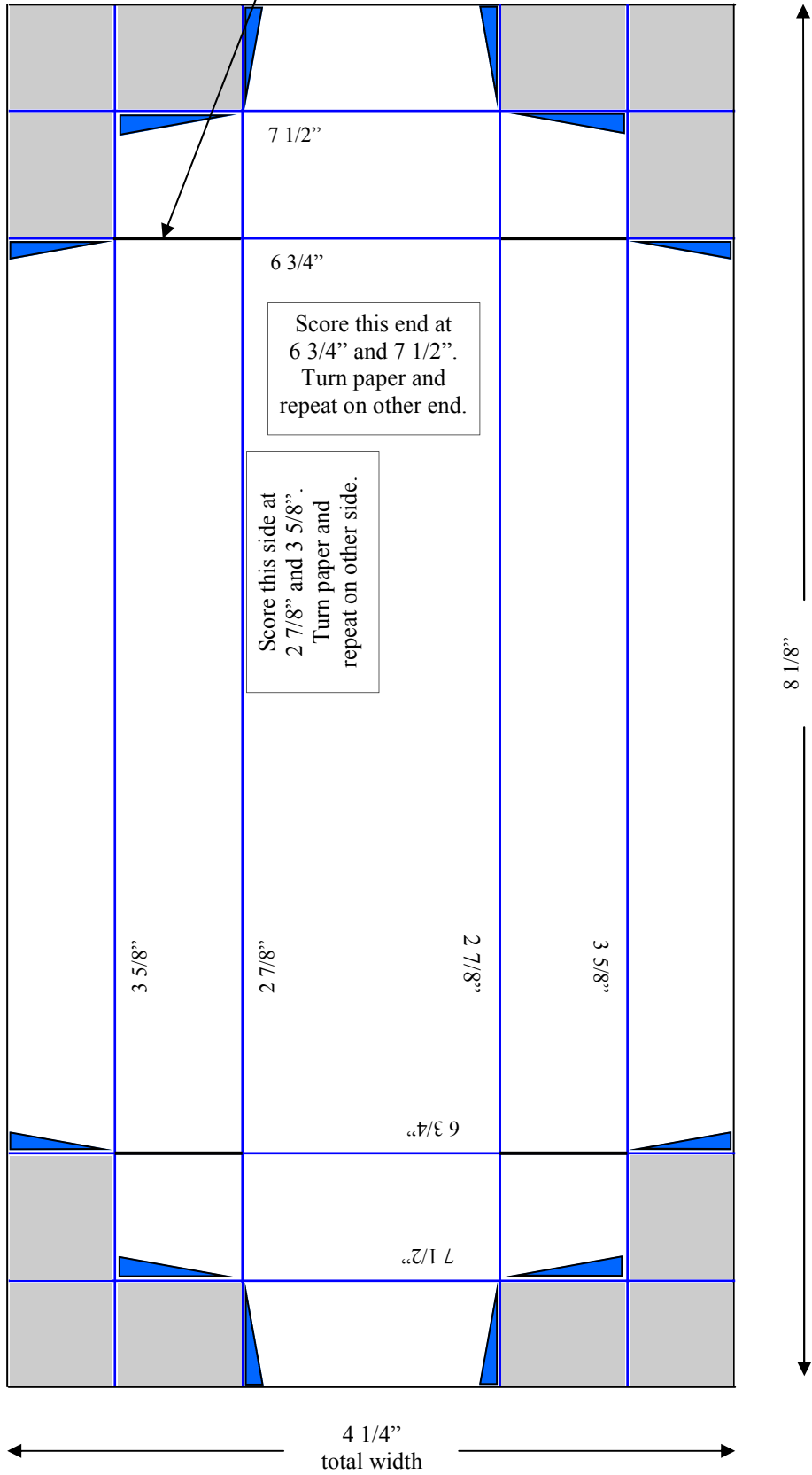


Nestle Treasures Box—Long 6 pieces (1 by 6)
 Graphics ©2007 by Chris Simon

Cut on dark black lines.

Cut out shaded areas. Snipping the blue triangles is optional, but will help corners fold better.

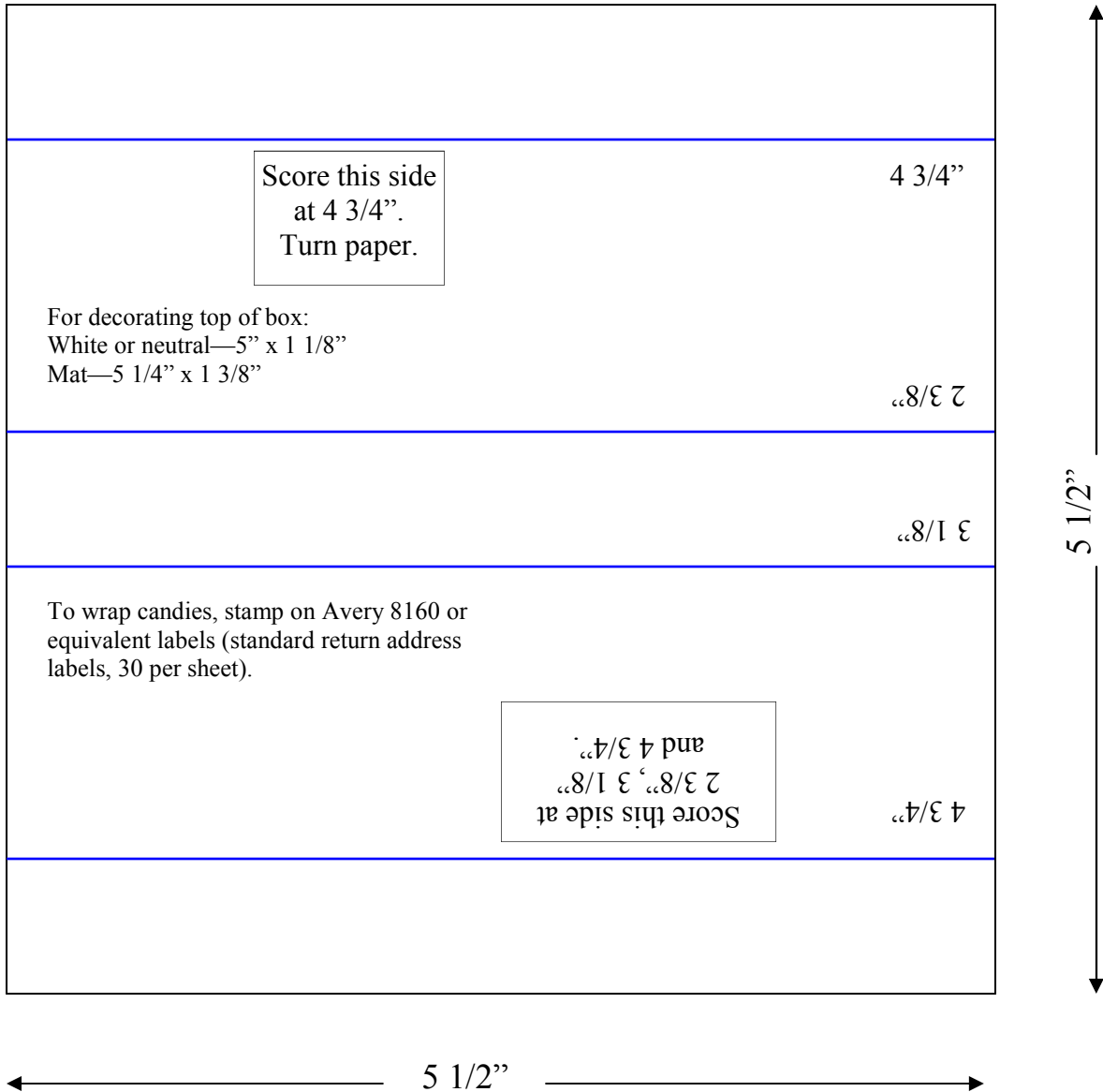


Score this end at
 6 3/4" and 7 1/2".
 Turn paper and
 repeat on other end.

Score this side at
 2 7/8" and 3 5/8".
 Turn paper and
 repeat on other side.

4 1/4"
 total width

8 1/8"



Nestle Treasures Box—Long 6 pieces (1 by 6)
Graphics ©2007 by Chris Simon