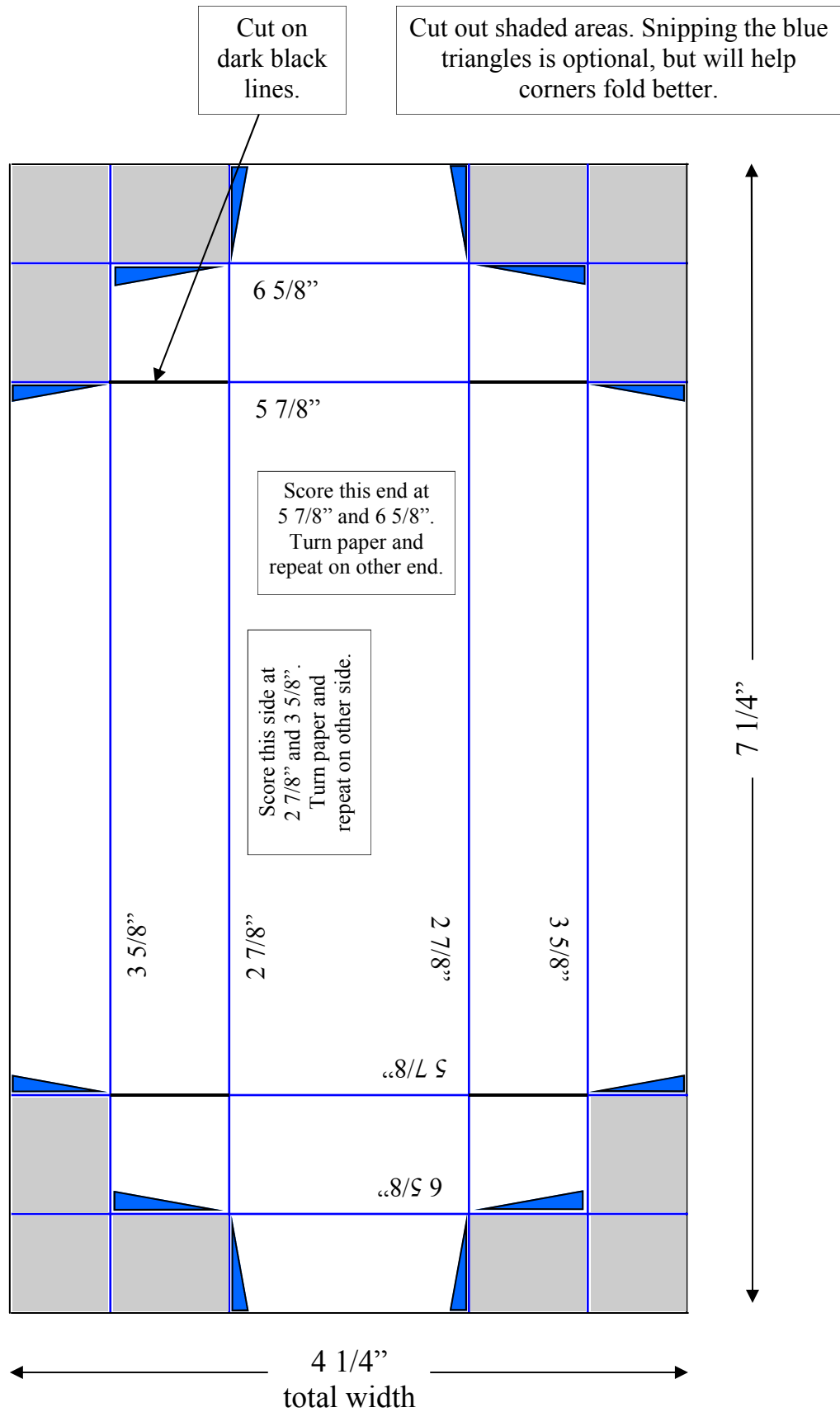
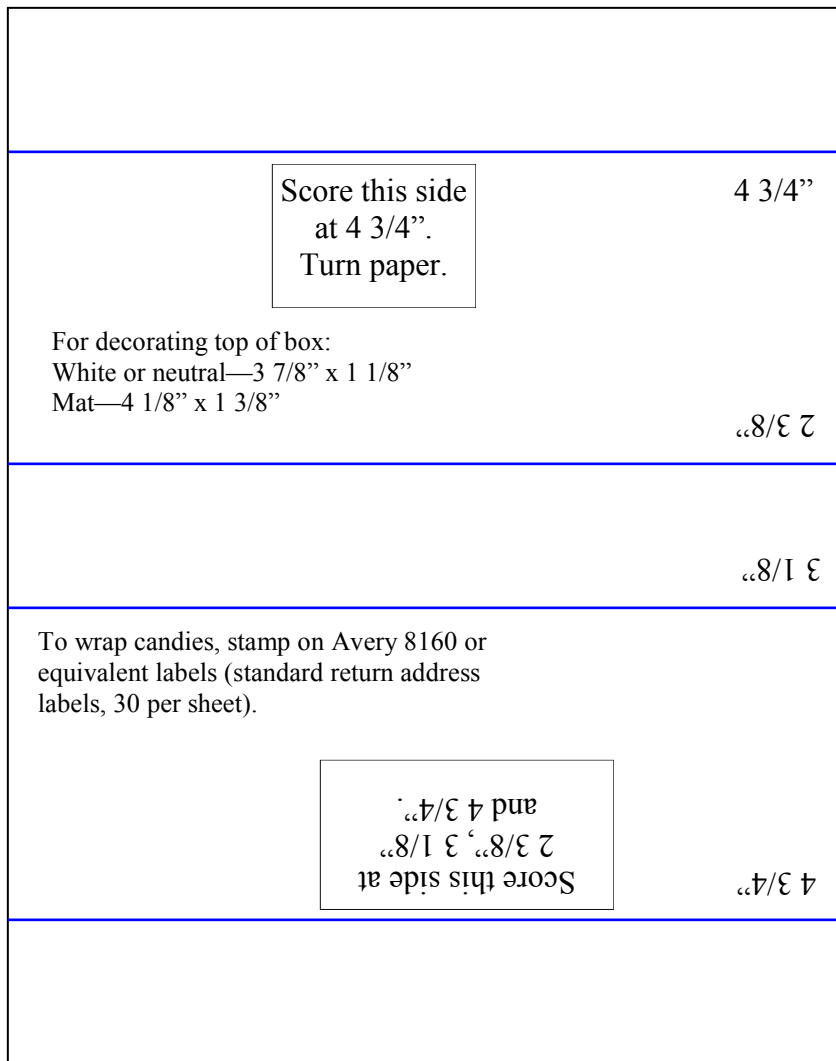


Nestle Treasures Box—5 pieces (1 by 5)
 Graphics ©2007 by Chris Simon



Nestle Treasures Box—5 pieces (1 by 5)
 Graphics ©2007 by Chris Simon



4 3/8"

5 1/2"

Score this side
 at 4 3/4".
 Turn paper.

4 3/4"

For decorating top of box:
 White or neutral—3 7/8" x 1 1/8"
 Mat—4 1/8" x 1 3/8"

2 3/8"

3 1/8"

To wrap candies, stamp on Avery 8160 or
 equivalent labels (standard return address
 labels, 30 per sheet).

Score this side at
 2 3/8", 3 1/8"
 and 4 3/4".

4 3/4"