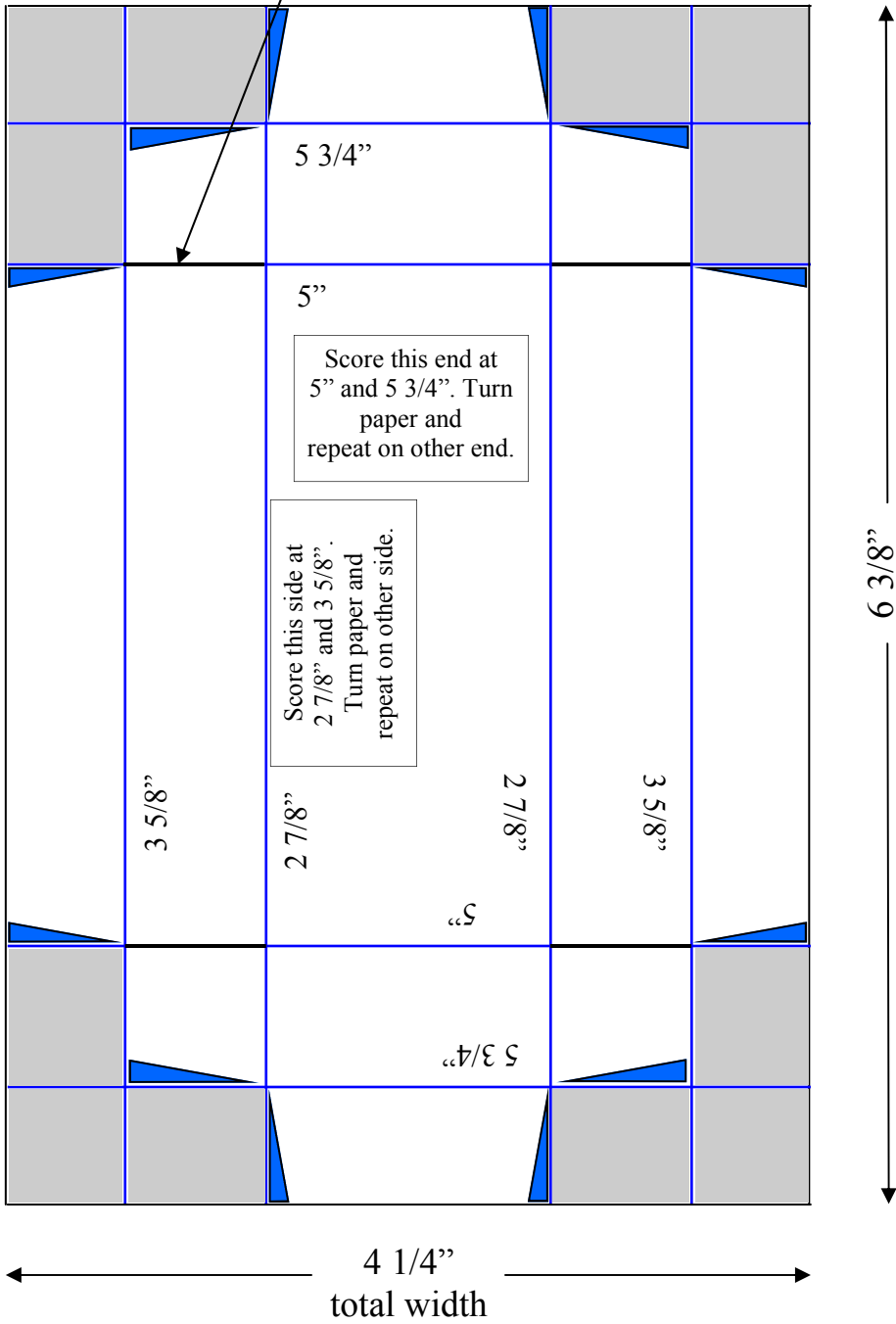


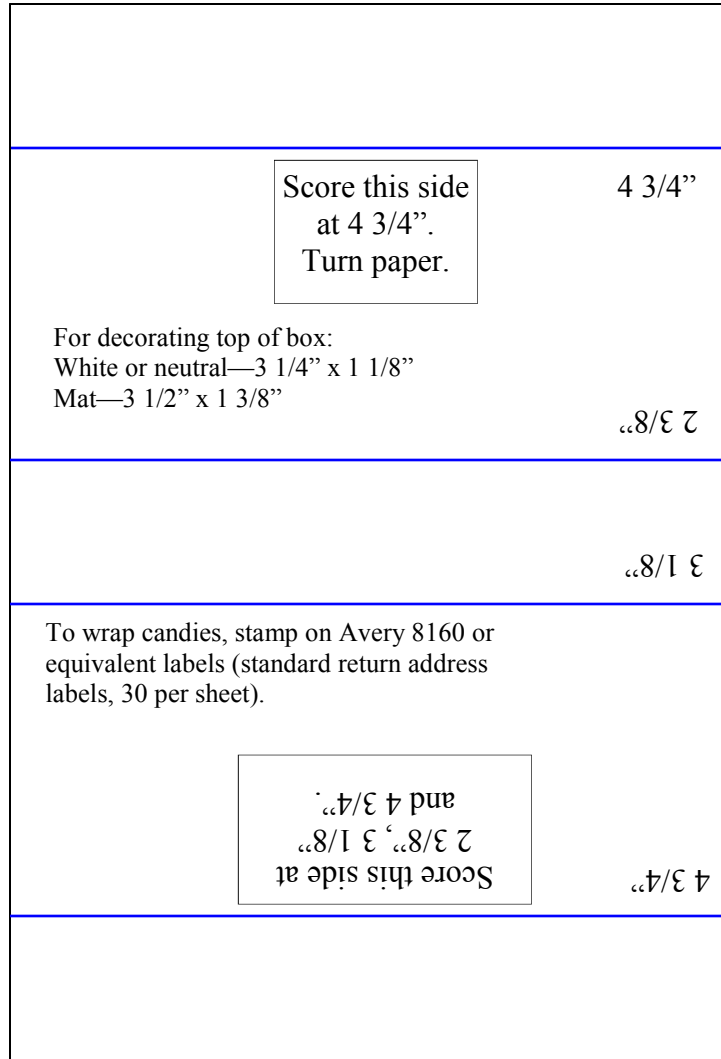
Cut on dark black lines.

Cut out shaded areas. Snipping the blue triangles is optional, but will help corners fold better.



Nestle Treasures Box—Long 4 pieces (1 by 4)
Graphics ©2007 by Chris Simon

Nestle Treasures Box—Long 4 pieces (1 by 4)
 Graphics ©2007 by Chris Simon



← 3 3/4" →

↑ 5 1/2" ↓