

Purse Gift Box/Card Set

The purse-sized gift box measures 7½ x 5½ x 2½ inches. Place five cards in this gift box. Each card is based on a plain white/vanilla cardstock. Decorate envelopes appropriately.

Card One

Cut parchment patterned paper 4¼ x 5½. Stamp border and sentiment and attach Stick-Ease floral piece with dimensional to pop up. Affix front to card.

Card Two

Cut green CS 4¼ x 5½. Stamp sentiment to create a background paper. Crumple a tag and then swipe with cranberry ink. Attach Stick-Ease floral piece to tag, attach ribbon with decorative clip, and affix to green CS. Insert brads before affixing completed front to card. Swipe card edges with cranberry ink.

Card Three

Cut cranberry CS 4¼ x 5½. Cut green patterned paper 1½ x 5¼ and large floral 2¼ x 5¼. Glue green and floral papers on cranberry CS. Stamp sentiment. Affix ribbon with bow to completed card front and affix front to card.

Card Four

Cut striped paper 4¼ x 3¾ and small floral 1¾ x 4¼ and glue to card. Add Stick-Ease border. Thread ribbon through three buttons and affix to striped area.

Card Five

Cut green patterned paper 4 1/8 x 5 3/8 (slightly smaller than card). Cut 3 strips of small floral paper measuring 5 3/8 x ¾. Cut 4 strips of striped paper measuring 4 1/8 x ½. Swipe each strip with cranberry ink. Weave and affix to green paper. Add brads and stamp sentiment. Affix completed front to card.

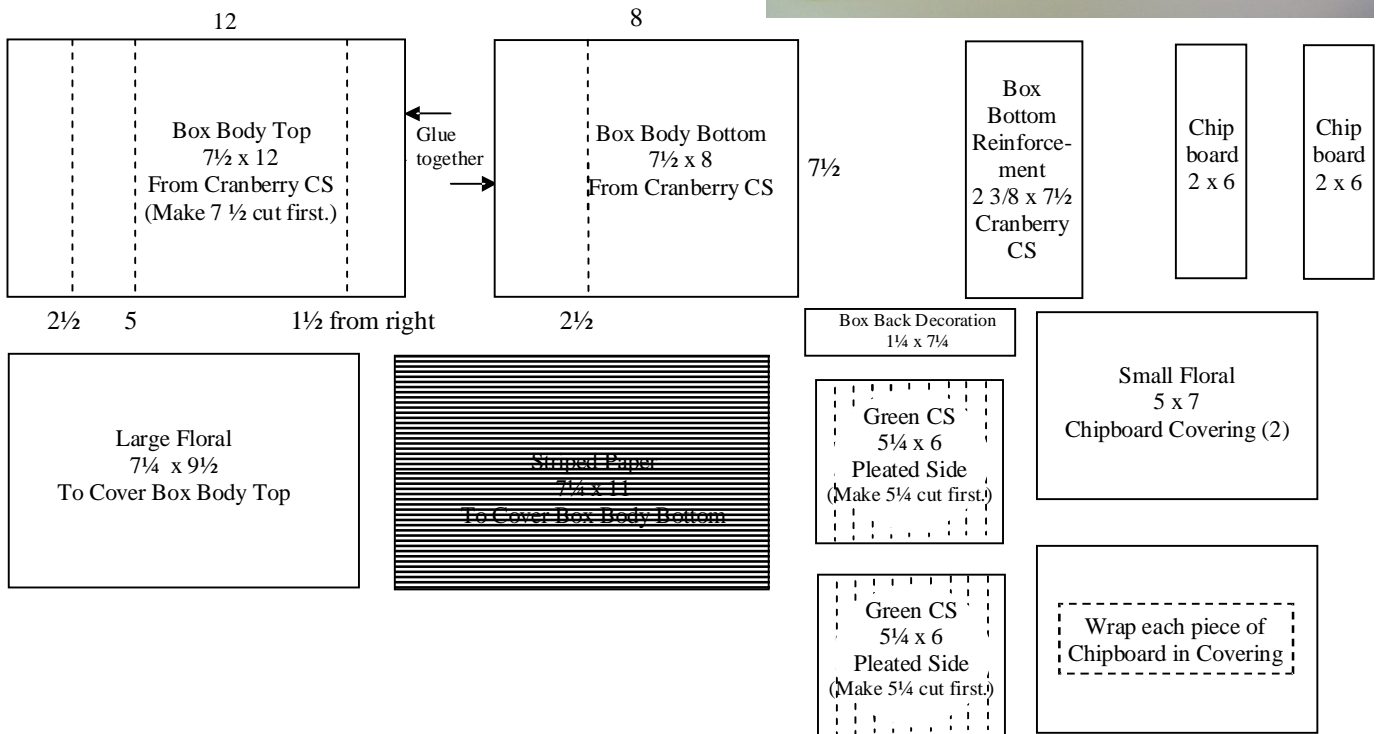


Purse Gift Box/Card Set

The purse-sized gift box measures 7½ x 5½ x 2½ inches.

Supplies:

- Box Body 2 pieces of cranberry cardstock (12x12)
- Box Sides 1 piece of garden green cardstock (12x12)
- 1 piece of large floral paper (12x12)
- 1 piece of small floral paper (12x12)
- 1 piece of striped paper (12x12)
- 2 pieces of chipboard (each 2x6)
- 1 yard of ribbon
- 1 piece of stick-on Velcro for closure
- Adhesive
- Red-lined tacky adhesive



Instructions:

1. Carefully and accurately cut and score each box body piece.
2. Construct box body, adhering the bottom pieces together where indicated. Add Box Bottom Reinforcement piece to the inside box bottom.
3. Cover box body, making certain the covering fits smoothly over the box body.
4. Add the Box Back Decoration piece to the back.
5. Cover the two pieces of chipboard (or any cardboard) with small floral patterned paper, gluing the ends in first and then wrapping and gluing the sides to the chipboard. Glue one wrapped chipboard piece in bottom of box body.
6. With an awl or other sharp tool (or Crop-A-Dile), make 1/8" holes in other wrapped chipboard one inch from each end. Place over the box top, mark and make holes, and glue wrapped chipboard to the inside of box body top. Add eyelets and ribbon.
7. Using red-lined tacky adhesive, glue the pleated sides to the box body.
8. Adhere the Velcro for closure and add decorative tab.
9. *Optional:* Box divider measuring 5¼" by 7" and covered with Small Floral paper and placed inside.