

# A dvent C alendar T utorial

**Overview:** This Advent Calendar is a great idea for your special someone. You will be able to add small treats in twenty-five 2" boxes. The finished project size is approximately 10 x 10". I hope you enjoy making this project as much as I did.

**Note:** all products are Stampin' Up! unless otherwise noted. Please feel free to distribute as I only ask that you do not publish the tutorial under your own name or sell it. However, if you do take credit for the tutorial, the stamp gods will descend upon your stamp room and hide your latest Stampin' Up! catalog!



## General Instructions and Hints:

1. This project has an extensive supply list. The tutorial was assembled for a class and associated kits. Everything in this tutorial can be substituted for design elements of your liking. However, if you substitute the small boxes you will need to adjust the measurements accordingly.
2. Cut the cardstock for the boxes (base) at  $2 \frac{1}{6} \times 2 \frac{1}{16}$ " not  $2 \times 2$ ". Although the boxes are  $2 \times 2$ ", not all boxes are exactly  $2 \times 2$ ". The extra  $\frac{1}{16}$ " is an overlap to hide the box edge; trim base to fit box if necessary.
3. Once you lift the Big Shot (BS) Peekaboo frame "door", it will no longer lay flat. Consider using a small tag or photo mount brad and slide assembly to keep the doors closed.
4. If some images I only wanted to use the stamp image without the day's number so I cut up the stamp. You may not want to cut up your stamps. Therefore, you need to color only the part of the stamp you want with a marker or mask with a post-it note. Also, some designs use computer generated numbers.
5. Decorate all the boxes and set aside until the box bottom is made in the final steps of this tutorial.
6. If adding Dazzling Details or other medium that requires drying time either add after small boxes are attached to the large box bottom or allow to dry completely before adhering small boxes to box bottom to prevent smearing.
7. Craft ink is only required when embossing; however because I like the look of craft ink all the stamping in this project is done with Craft ink. If you do not have Craft ink for embossing, substitute by first inking the stamp with VersaMark ink and then stamping your stamp onto a Classic stamp pad. The VersaMark ink gives you enough time to add embossing powder. The VersaMark ink will not harm your Classic stamp pad.
8. Use tweezers to hold small parts when adhering pieces together.
9. All paper pieces are attached using Tombow mono adhesive or double stick tape. Embellishments and ribbon are attached with mini glue dots.
10. When attaching base layers to the boxes make sure glue/tape is close to the edge and in the center to prevent the base layers from lifting off of the boxes.
11. Some of the boxes have rough edges near the box top opening. I used fine grit sandpaper to remove any rough edges before applying base layers.

# Advent Calendar Tutorial

## SUPPLY LIST

### Paper

#### 8 ½ x 11 Cardstock

- 2-3 sheets Cherry Cobbler (CC)
- 1 sheet Garden Green (GG)
- ½ sheet - Very Vanilla (VV)
- 1 sheet - Whisper White (WW)
- ½ sheet - Chocolate Chip Texture (Choc)
- ½ sheet Early Espresso (Espresso)
- 14 ¼ x 14 ¼ White cardstock or watercolor paper(box bottom)

#### 12 x 12 Cardstock

- Holly Berry Bouquet (2011 mini)
- Frostwood Lodge (2011 mini)
- Garden Green texture
- Whisper White texture
- Chocolate Chip texture
- Early Espresso texture
- Scraps - Patterns Designer Series Paper (DSP) Stack
  - Regal (GG, CC)
  - Neutrals (CC)

### Inkpads & Markers

Note: **All inkpads are Craft inkpads (see #7 above)**

- Garden Green
- Cherry Cobbler
- Early Espresso
- Basic Black (BB)
- Whisper White
- Basic Black Marker; Optional: Black Glaze Marker (non-SU)
- Cherry Cobbler Marker
- Garden Green Marker
- Uni-ball Signo Gel Pen or Acrylic Glossy Paint (non-SU)

### Stamps

- 25 & Counting (2011 mini)
  - Jolly Bingo Bits
  - Got Treats
  - Jolly Jingles Wheel\*
  - Small foam number set (non-SU) or Calendar Alphabet & Numbers
- \* Note: I've unmounted all my wheels and cut them into individual stamps using EZ mount foam for a stamp mount

### Big Shot (BS) Die Cutter / Dies / Embossing Folders

- Peekaboo Frames
- Northern Frost Strip Die
- Square Lattice embossing folder
- Mover & Shaper Holiday Windows & Curly Label
- Polka Dot embossing folder
- Christmas Tree (non-SU)
- Die cut numbers (non-SU) or Timeless Type Junior Alphabet BS die

### Tools

- Paper cutter / trimmer
- Small detail scissors & ribbon scissors
- Tweezers
- Heat Gun and embossing buddy
- Crimper

## PUNCHES

- Stocking Builder (2011 mini)
- Curly Label
- Scallop Square
- Tiny Tag
- 1" Square Punch (2011 mini)
- 1/16" Circle or Paper Piercing Tool and Mat Pack
- ½" circle punch
- 1" Circle
- 1" Scallop Circle (non-Stampin' Up!)

- 1 ¼" Circle
- 1 ¾" Circle
- 1 ¾" Scallop Circle
- 1 3/8" Circle
- Itty Bitty Shapes Punch Pack (circle)
- Scallop Edge Border
- Ornament Punch
- Designer Label (retired)
- Word Window
- ¾ x 15/16" punch (retired)

# A dvent C alendar T utorial

## EMBELLISHMENTS

- |  |   |
|--|---|
| <ul style="list-style-type: none"> <li>• Mini Jingle Bells (2011 mini)</li> <li>• 6 - Small red jewels</li> <li>• Optional: Photo mount brad and slide assembly (not shown in pictures)</li> <li>• 1 Mini Library Clips</li> <li>• Brad (1 – GG)</li> <li>• 4 Gold square brads (non-SU)</li> <li>• 1 Small green button (non-SU)</li> <li>• Candy canes (non-SU)</li> </ul> | <ul style="list-style-type: none"> <li>• 2 red buttons (non-SU)</li> <li>• 1/8" Taffeta Ribbon (Espresso, Real Red)</li> <li>• Seam binding ribbon (CC)</li> <li>• 1 White small safety pin (non-SU)</li> <li>• 2 small green safety pins (non-SU)</li> <li>• Red jewel stickers (non-SU)</li> <li>• Baker's Twine (White, CC, EE)</li> <li>• Baker's Twine (Green (non-SU)</li> <li>• 1 Red tiny pom-pom</li> <li>• Gold thread</li> </ul> |
|--|---|

## MISCELLANEOUS

- |   |  |
|---|--|
| <ul style="list-style-type: none"> <li>• Dazzling Details</li> <li>• Iridescent Ice Embossing Powder</li> <li>• Optional: Glitter Glue (non-SU) (green, red)</li> <li>• Clear Embossing Powder (EP)</li> <li>• Cherry Cobbler EP</li> <li>• 2 x 2 x 2" white gift boxes (ULINE.com)</li> <li>• 10 x 10 x 2 1/2" gift box (Lasting Impressions Packaging.com)</li> </ul> | <ul style="list-style-type: none"> <li>• 1 - BS Adhesive Sheet</li> <li>• Tombow mono glue</li> <li>• Double-Stick tape</li> <li>• Dimensionals</li> <li>• Mini Glue Dots</li> </ul> |
|---|--|

## INSTRUCTIONS

### Day 1.

- 1 – WW scrap
- 1 – Peekaboo Frame Circle (CC)
- 1 – Northern Frost 1" Snowflake (WW)
- 1 – Green Plaid DSP base (Frostwood Lodge)
- 1 – Die cut a number 1 using Patterns DSP (GG)

1. Stamp day 1 using GG on WW paper; emboss with clear embossing powder; punch using 1" square punch
2. Optional: add green glitter glue
3. Assemble all layers
4. Attach assembled base to box top
5. Add glitter glue



# A dvent C alendar T utorial

## Day 2.

1 – CC base                      1 – GG Curly Label                      1 – CC scrap  
 1 – WW scrap                      3 – red small jewels

1. Cut GG texture to 2 1/16 x 2 1/16; center over Mover & Shaper Curly Label die and cut. You'll use the label for day 2 and save the outside for day 9
2. Stamp day 2 using GG on WW; cut out and attach to label
3. Stamp day 2 using WW on CC paper; emboss with white EP; cut out the #2 and attach over the green #2 with Dimensionals
4. Attach assembled base to box top
5. Attach jewels to holly berries; Hint: use paper piercing tool or craft knife to place jewels on project



## Day 3.

1 – Espresso base                      1 – CC Scallop Square  
 1 – Mini clip                      1 – WW scrap

1. Dry emboss base using Square Lattice embossing folder; attach to box. Hint: Dry emboss some small extra scraps for the stocking on day 10
2. Stamp day 3 using CC onto WW paper; punch with 1" Square.
3. Attach layers to box; attach Mini Library Clip; attach to box
4. Color snowman coal and draw hat with BB marker or use black glaze pen



## Day 4.

1 – DSP red plaid base                      1 – CC tiny tag  
 1 – GG texture large scallop square frame                      1 – 1" Circle DSP  
 1 – 1 1/2 x 1 1/2" WW texture                      1 – WW texture scallop square  
 1 – Number 4 DSP die cut                      1 – Green brad  
 3 – Small red jewels

1. Punch small hole in top right corner of base; punch small hole in tag; insert brad through tag and base
2. The Peekaboo frame piece is too big for the box so you want to keep the shape of the door and just remove the 3 sides of the scallops. Trim scallops from the top, right, and bottom of the GG frame. Important – keep one of the longer scallop edges in one piece – you need a 2" scallop piece for day 23.
3. Score frame at 1/2" from remaining (left) scalloped edge; fold and attach to base (the textured piece will open like a book once attached to the base (see picture))
4. Stamp day 4 using GG onto 1 1/2 x 1 1/2" WW texture; attach over the scallop scored piece (see picture) (Note: the GG frame is slightly larger than the WW inside piece)
5. Attach scallop square onto front of frame; Attach DSP 1" circle onto the scallop square
6. Attach die cut number 4 onto circle
7. Attach assembled base to box top
8. Attach 3 small red jewels to tag. Slide tag over the frame to keep it closed.



# A dvent C alendar T utorial

## Day 5.

1 – DSP base  
 1 – Espresso texture 3/4" Scallop Circle  
 1 – WW scrap

1. Stamp day 5 using GG onto WW cardstock; Punch with 1 3/8" circle
2. Assemble layers and attach to box top
3. Stamp day 5 using CC on WW and punch with Itty Bitty circle; attach over the GG 5 using a Dimensional
4. Add wee dots of green glitter glue to green bows and wee dots of red glitter glue to red bow



## Day 6.

1 – Choc texture base  
 1 – WW scrap  
 1 – Choc texture Designer Label  
 1 – 1 3/4" DSP circle  
 1 – WW 1" Scallop Circle  
 Espresso 1/8" Taffeta Ribbon

1. Attach layers to base
2. Stamp day 6 on WW scrap; cut out bell and attach to scallop circle; attach bow using mini glue dot
3. Optional: add red glitter glue to bell



## Day 7.

1 – DSP base  
 1 – CC small square frame  
 1 – white safety pin; 2 candy canes  
 1 – 1 3/4 x 1 3/4 WW  
 1 – scrap WW

1. Using CC stamp just the candy canes in the center of the WW square
2. Using CC stamp "seven" on WW scrap and cut out
3. Attach layers and attach to box top; attach safety pin with mini glue dots; Attach candy canes with glue



# A dvent C alendar T utorial

## Day 8.

- |                        |                         |
|------------------------|-------------------------|
| 1 – DSP base           | 1 ¾” DSP scallop circle |
| 1 - WW scrap           | 1 – GG scrap            |
| 1 – Small green button | White Baker’s Twine     |

1. Attach scallop circle to base
2. Using Espresso stamp reindeer on WW; punch with 1” circle; attach to scallop circle
3. Using Espresso stamp “eight” on GG scrap; cut out; attach to base
4. Thread white Bakers Twine through tiny button; using end of scissors, fray ends of twine; attach to box using a mini glue dot



## Day 9.

- |  |                      |
|--|----------------------|
| 1 – WW base  | 1 – DSP die cut tree |
| 1 – GG texture Mover & Shaper Curly Label (use label from Day 2) |                      |
| Jewel stickers   |                      |

1. Using CC stamp day 9 on the base
2. Either cut around label or leave in one piece (see picture); attach tree to layer to label; Note that the tree base is underneath the Curly Label at the bottom and over the label on the left side
3. Attach Curly Label to base
4. Attach assembled base to box top; add jewel circle stickers to tree



## Day 10.

- |  |                       |
|--|-----------------------|
| 1 – CC base  | 1 – Die cut number 10 |
| 1 - 1 ¾ x 1 ¾” CC  | 1 – DSP 1” circle     |
| 1 – 1 7/8 x 1 7/8 WW (I cut a 2 x 2” piece and shaved 1/8” from 2 sides) |                       |
| Cherry Cobbler Baker’s Twine   |                       |

Stocking: Cut stocking pieces using Stocking Builder Punch

1 – DSP scrap; 1 – GG scrap; 1 - Espresso dry embossed scrap (see day 3)

1. Attach layers; build stocking and attach to base to box
2. Attach die cut number 10 to 1” circle; trim to fit circle if necessary
3. Tie a knot in center of two pieces of 2” long CC Bakers twine; attach to stocking using mini glue dot



# A dvent C alendar T utorial

## Day 11.

- |                    |                           |
|--------------------|---------------------------|
| 1 – DSP base layer | 1 – 1 ½ x 1 ½” GG texture |
| 1 – WW scrap       | 4 – Gold square brads     |

- Mix a small amount of CC embossing powder and equal amount of Iridescent Ice; stamp day 11 with CC ink and heat emboss with the embossing mixture; punch with 1” square punch; attach to GG textured square
- Punch holes in each corner of base and insert brads. Fold brad butts (i.e. brad ends) toward the box center
- Attach assembled base to box top



## Day 12.

- |                          |                            |
|--------------------------|----------------------------|
| 1 – Choc texture base    | 1 – 1 ¾” CC scallop circle |
| 1 – 1 ¼” Espresso circle | 1 – WW scrap               |

- Using GG stamp day 12 on WW scrap; punch with 1” circle punch; color berries and bow with CC marker
- Attach layers and attach to box top
- Optional: add red glitter glue to wreath



## Day 13.

- |                   |                                   |
|-------------------|-----------------------------------|
| 1 – DSP base      | 1 – GG texture small square frame |
| 1 – 1 ¼ x 1 ¼” CC | 2 – WW scrap                      |
| 1 – DSP scrap     | 1 – White brad                    |

- Attach base to box top
- Using Espresso stamp day 13 on CC and DSP scrap; cut bottom of mug from DSP and attach to CC mug; using a white gel pen, color mug rim and handle
- Attach CC piece to the center of the GG frame; trim the CC piece to match the GG frame
- Punch small hole in upper right corner of GG frame and insert brad folding the brad butt toward the center; attach to base
- Using GG, stamp 2 sets of Holly leaves (Jolly Bingo Bits) on WW; cut out; color berries with marker and attach to GG frame
- Attach die cut number 13 to the frame door
- Optional: add red glitter glue to berries and add white enamel paint to marshmallows for a puffed-up look



# A dvent C alendar T utorial

## Day 14.

- 1 – DSP base
- 1 – GG Ornament punch
- 1 – WW Mover & Shaper Ornament
- 1/8" Taffeta Ribbon (Real Red)

1. Using BB, stamp day 14 on GG ornament; attach layers and attach to box top
2. Using RR ribbon, tie bow and attach with mini glue dot; Optional: add red glitter glue to stocking



## Day 15.

- 1 – CC base
- 1 – CC 1 ¼ x 1 ¼"
- 1 – WW scallop square
- 1 – WW scrap

1. Using CC, stamp day 15 on WW scrap and punch with 1" square
2. Attach layers; punch 2 small holes on top left and bottom right into CC base next to the scallop square; insert white safety pins; attach assembled base to box top
3. Color mailbox bow with GG marker; assemble layers and attach to box
4. Optional: add green glitter glue to mail box bow



## Day 16.

- 1 – Choc DSP base
- 1 – CC 1 x 1" s
- 1 – CC scrap
- 1 – Espresso Curly Label
- 1 – WW scrap

1. Using Espresso, stamp day 16 on WW scrap ; trim and attach to CC 1" square
2. Using Espresso, stamp day 16 on CC scrap; cut out sled and attach to using Dimensionals; Optional: add red glitter glue





# A dvent C alendar T utorial

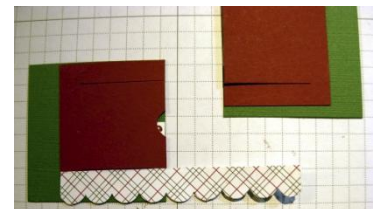
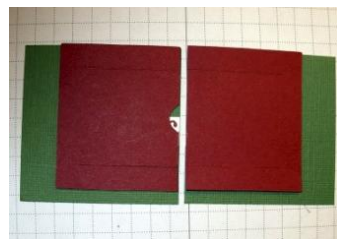
## Day 17. and Day 18.

Day 17 and Day 18 are made together

- 1 – GG texture 2 1/16 x 4” (base layer)
- 1 –CC large rectangle double-door frame
- 1 – WW scrap
- 2 – small red buttons
- 1 – DSP scrap
- Green Baker’s Twine



1. Attach double-door frame to GG; placement is centered horizontally and vertically at the top of the GG piece; cut in half using center cut of frame as a guide
2. Scallop edge punch ¾” x 3” scrap of DSP; attach to the bottom of CC frame. The scallop should be even with the bottom of the GG base layer but not stop the frame doors from opening; trim top edge of scallop border if necessary; trim ends of scallop border to fit CC frame
3. Using CC stamp “Santa is Coming” from the Jolly Jingles wheel on WW scrap; punch with Word Window and trim to fit door opening; attach onto GG under the frame doors  
 Note: I unmounted all my wheels and cut them into individual stamps using EZ mount foam for a stamp mount.
4. Attach each base to its respective box
5. Thread green Bakers Twine through button holes ; attach buttons to base using mini glue dots
6. Using BB stamp day 17 ( do not ink the words “eighteen”) on WW scrap; punch with 1” scallop circle; Note: I cut the “eighteen” off of my stamp to make this step easier
7. Using BB stamp day 17 (only the word “eighteen” on WW scrap; trim
8. Using BB stamp the penguin (Jolly Bingo Bits) on WW scrap; punch with 1” scallop circle
9. Attach day 17, penguin, and eighteen to door frames
10. To secure doors add a mini library clip



## Day 19.

- 1 – DSP base
- 1 – 1 ¾ x 1 ¾” VV

1. Using GG, stamp just the number 19 in the top left corner of the VV square
2. Using GG, stamp Jingle Bells (Jolly Jingles wheel) on VV scrap
3. Using CC, stamp the jingle bell (Jolly Bingo Bits) onto the VV
4. Attach assembled base to box top
5. Attach mini jingle bell using a mini glue dot



# A dvent C alendar T utorial

## Day 20.

- 1 – Choc base                      1 – VV die cut using Mover & Shaper label
- 1 – GG scrap                      1 - VV scrap

1. Attach base to the box
2. Using BB, stamp day 20 on GG and VV scrap; trim GG; cut out just the globe from the VV; attach the VV globe to the GG piece
3. Dry emboss the VV label using the Polka Dot embossing folder
4. Wrap Espresso Bakers Twine around the label (In order to have both ends of the twine be on the front you have to wrap one side around the label twice. If this does not make sense, you will see when you wrap the twine around the label and you have one end on the back and one end on the front. Just wrap the end that is on the back towards the front); tie bow to right side of tag
5. Attach the VV label to base using Dimensionals; attach globe to label over the twine



## Day 21.

- 1 – CC base                              1 – DSP 1 3/4 scallop Circle
- 1 – Red safety pin                      1 – VV computer generated number 21

1. Attach base to box
2. Punch number 21 with 3/4 x 15/16" punch; punch small holes and insert safety; attach to scallop circle
3. Attach scallop circle to base



## Day 22.

- 1 – DSP base                      1 – 1/2 x 2 1/16" strip crimped CC cardstock
- 1 – 1 3/4 x 1 3/4" WW

1. Using GG, stamp day sentiment (Jolly Jingles) and 22 from day 22; using CC stamp ornament (Jolly Jingo Bits) on WW
2. Attach crimped strip and stamped piece to base
3. Punch hole in the ornament and wrap gold cord from the front through the hole and back around to the front and tie bow.
4. Attach assembled base to box top



## Day 23.

- 1 – Espresso base                      1 – VV 1 7/8 x 1 7/8
- 1 – VV 2 x 3/4                      1 – GG scallop strip (see day 4)
- 1 – Red tiny pompom

1. Attach base to box
2. Using Espresso ,stamp reindeer (Jolly Bingo Bits) on VV 1 7/8 x 1 7/8"
3. Using CC, Stamp "Got Merry" (Got Treats) below the reindeer
4. Using GG, stamp small numbers (non-SU) on VV 2 x 3/4" piece
5. Attach GG, scallop strip to large VV piece; attach 2 x 3/4" VV piece over scallops; trim; attach assembled piece to box base
6. Attach tiny red pom-pom to reindeer using glue



# A dvent C alendar T utorial

## Day 24.

- 1 – DSP base                      1 – GG 1 ¾” circle
- 1 – CC circle frame            1 – VV scrap
- 1 – White pompom

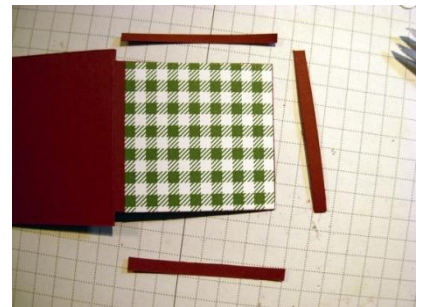
1. Using GG, stamp “Ho!, Ho!, Ho!” (Jolly Jingles wheel) on a VV scrap; punch with 1 ¼ circle; attach to center of GG circle; attach CC frame to GG circle
2. Using GG, stamp day 24 on VV; punch using ½” circle punch; attach to base using Dimensionals
3. Attach assembled base to box top
4. Using CC, stamp Santa (Jolly Jingle Bits) onto VV; punch with 1” circle; attach to frame door with Dimensionals; attach white pom-pom to Santa’s hat using glue



## Day 25.

- 1 – CC 2 1/16 x 4” base                      1 – DSP 1 ¾ x 1 ¾
- 1 – WW texture 1½ x 1 ½                      1 – DSP scrap
- 1 – WW scrap

1. Score base at 2” and fold in half
2. Center the 1 ¾” square DSP on front of the base and attach to base; trim around the DSP to remove the CC paper; when you are finished you should have a flap that is smaller than the base (see picture)
3. Wrap CC seam binding ribbon around the 1 ½ WW square and tie knot in the front; attach to the DSP; attach assemble piece to box top
4. Using BB, stamp number 25 on DSP scrap; punch with tiny tag; attach under bow using mini glue dot
5. Using BB, stamp day 25 image only (not the number 25) on WW scrap; punch with scallop square; attach under the base door flap



# A dvent C alendar T utorial

## Outside Box Bottom

14 ¼ x 14 ¼" white cardstock or watercolor paper

Note: I used watercolor paper because that was all I could find locally in a size large enough and strong enough to use for the box bottom that holds all the small boxes and still allow for scoring and folding without cracking.

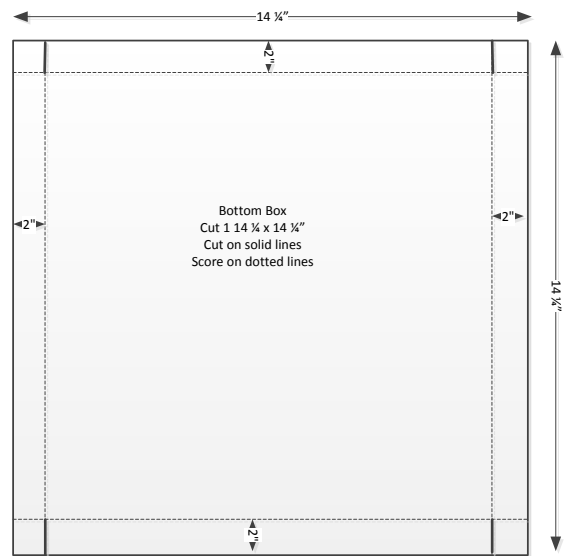
1. Score at 2" on all sides; cut to the score line as shown in picture to form box flaps; burnish score lines; **DO NOT SECURE BOX FLAPS** as it is much easier to apply the BS adhesive sheet in the next step if do not secure the box flaps first.
2. Cut a Big Shot Adhesive sheet to 10 x 10"; peel back a few inches of the cover sheet and attach to inside of the box bottom and burnish (press down) onto the box; slowly peel off the rest of the cover sheet (this is the same as when you apply contact paper – see picture); you should now have the adhesive attached to the inside bottom of the box with the remaining cover sheet attached;

Now you can fold in and secure the box flaps to form the box; peel off the remaining cover sheet; you should have just a layer of adhesive on the bottom of the box.

3. Arrange your small boxes on your worktable in numerical order (1-25); starting with box #1, add glue to 3 sides of the box (left, right, and back – see picture);

Press box #1 into the top left corner of the box making sure the box has a snug fit and the box corner is square (see picture – FYI the picture displays a red box but this was the prototype and in the final project I did not cover the outside of the box)

4. Apply glue to box #5 and adhere to top right corner; then attach box #2, #3, #4. Attaching boxes in this order makes sure you start with all boxes aligned because if the first row is crooked all the other boxes will be slightly off.
5. Attach all the remaining boxes in the same manner. When you fit in the last box it will be a very snug fit but it will fit.



# A dvent C alendar T utorial

## Box Top

The top box (cover) is the 10 x 10 x 2 ½" gift box with a the striped ribbon.

Hint: Apply a small amount of glue to the inside flaps of the box top to keep them from snagging on the little boxes.

Whew! You are finished – hope you had fun.

