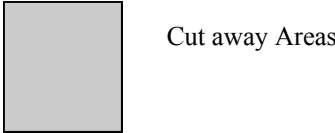
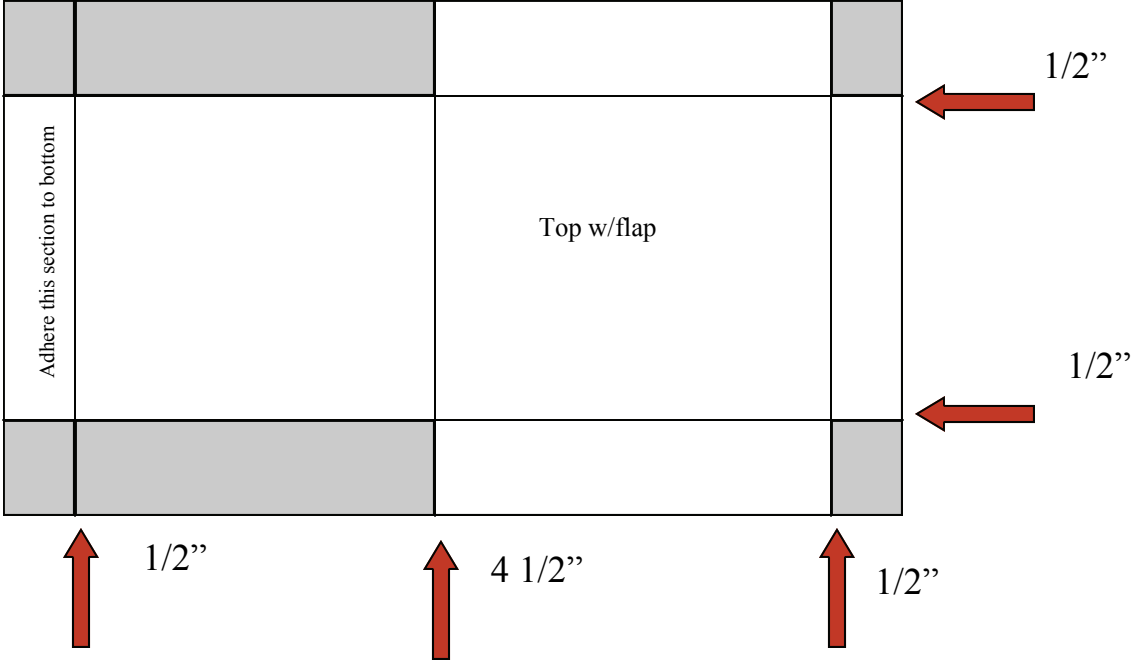


Valentine's Day Cupcake Gift Box
 By: Katy M.
www.kscardcreations.blogspot.com

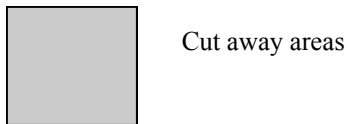
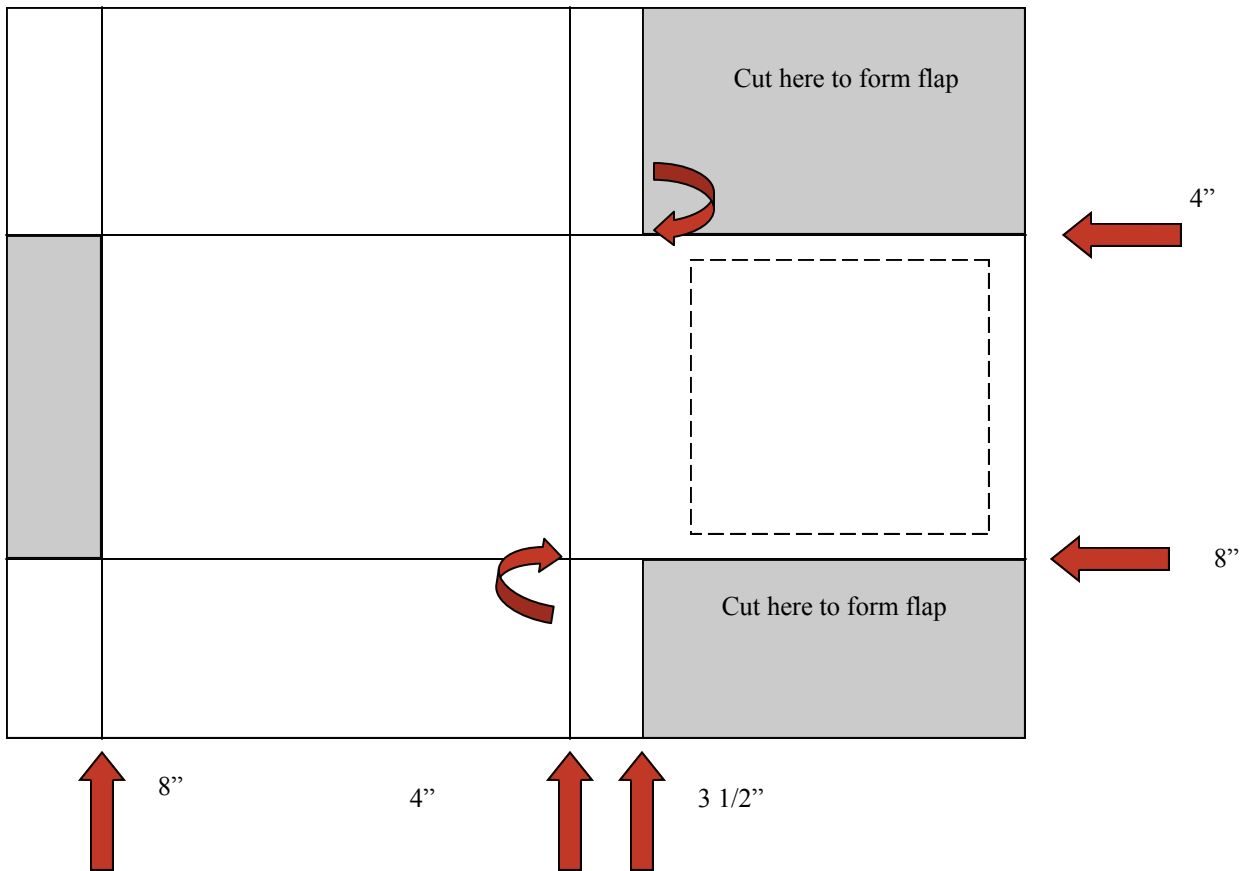


Section #1 of Cupcake box



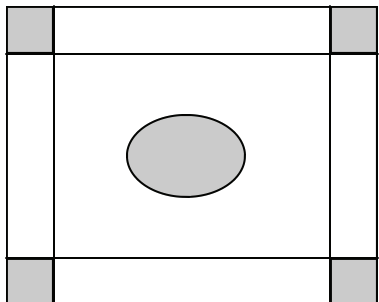
First cut your 12x12 piece of cardstock down to 9"x5 3/8".
 Next Score your box at the above measurements.
 Cut away the shaded areas.
 Set aside

Section #2 of Cupcake Box



Cut your 12x12 cardstock down to 12"x8 1/2"
 Next score your lines at the above measurements.
 Trim away shaded areas.
 Next cut out window. (I used my nestabilities die)

Section #3 Cupcake Tray



Cut your cardstock to 5 7/8" square.
 Score 1" around.
 Trim away shaded area.
 Cut center out for cupcake. Make sure it is not too big so that the cupcake will fall through.
 Next stamp as desired all over box sections.
 Apply cellophane to the window opening.
 Adhere flaps and insert cupcake tray.