

5 1/2 x 8	Card base
5 1/2 x 4 1/4	Card base folded (or card front only)
5 1/4 x 4	1 st layer (bottom) card front (or inside signature page)
5 x 3 3/4	2 nd layer (middle) card front
4 3/4 x 3 1/2	3 rd layer (top) card front

Mini Composition Book Cover

4 1/4" x 3 3/8" (or) 3 1/4" if using a separate spine
 Spine: 4 1/4" x 2" (score at 1 1/16" from each long side)

3" x 3" card

(for Figures of Speech)

Cut paper 3" x 6"
 1st layer: 2 3/4" x 2 3/4" 1st layer: 2 3/4" x 2 3/4"
 2nd layer: 2 3/4" x 2 3/4" 2nd layer: 2 1/4" x 2 1/4"
 3rd layer: 2 1/2" x 2 1/2" 3rd layer: 1 15/16" x 1 15/16"

Tag Pocket Book:

Score 8 1/2" x 11" cardstock every 2 3/4" width-wise
 Fold cardstock in half lengthwise
 Section 1: tear a diagonal strip off to make pocket
 Section 2: punch half circle in the top to make pocket
 Section 3: fold over corner diagonally to make pocket
 Section 4: Fold down top to make pocket

Tag Accordion Booklet

Cover: 2 pieces matboard 4 3/4" x 3 1/4"
 2 pieces designer paper 5 1/4" x 3 3/4"
 Inside: 2 pieces cardstock 4 1/2" x 3"
 1/2 sheet cardstock 11" long, scored every 2 3/4"

Accordion Card

Cover: 2 pieces matboard 4" x 4"
 2 pieces designer paper 4 1/2" x 4 1/2"
 2 pieces coordinating cardstock 3 3/4" x 3 3/4"
 (to cover inside backs of matboard)
 Inside: 1 piece neutral cardstock 3 1/2" x 7"
 1 piece neutral cardstock 3 1/2" x 10 1/2"

Post-It Covers

Regular 3x3 Post-It:
 1 piece cardstock 6 3/4" x 3 1/4"
 (score at 3 1/4" from each end)
 Bottommost layer for front: 3" x 3"
 Uppermost layer: 2 3/4" x 2 3/4"
 17" of ribbon or fiber to tie

Small 2 1/2" x 2 1/2" Post-It:
 1 piece cardstock 5 3/4" x 2 3/4"
 (score at 2 3/4" from each end)
 Bottommost layer for front 2 1/2" x 2 1/2"
 Uppermost layer for front 2 1/4" x 2 1/4"

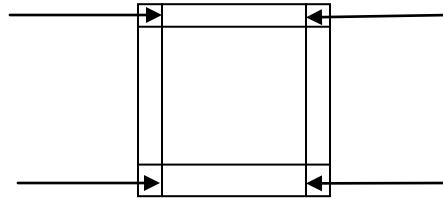
Beaded Pens

RSPV pen cover:
 1 each stamped label & double-sided sticky tape: 1 1/4" x 3 1/4"
 Microbeads

Bic pen cover:
 1 each stamped label & double-sided sticky tape: 4 1/4" x 1 1/8"

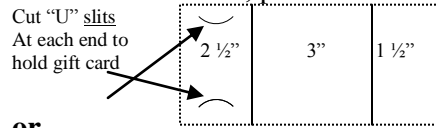
Gift Box:

2 equal sized pieces cardstock
 On 1st piece (bottom), score all 4 sides 1" to 3" in depending on what size box you want (how deep, too)
 Fold on score lines & crease sharp.
 On 2nd piece (top) score 1/16" wider than the top was scored. Snip the small lines as shown to form flaps.



Gift Card Holder

Cut cardstock 7" x 5"
 Score at 1 1/2" & 4 1/2" width wise
 In the 2 1/2" section, punch slit on each side



or

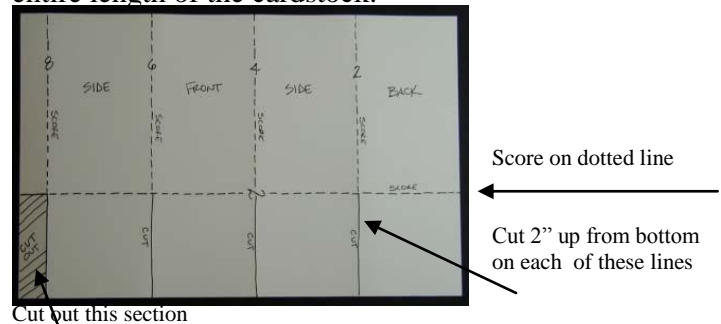
Cut cardstock 7 1/4" x 5 1/2"
 Score at 2 1/2" & 5 1/2" width wise
 Cut separate piece cardstock 5" x 3" for inside to hold the gift card. Use slit punch at each end.
 Adhere to inside of first piece of cardstock.

Matboard Journal

Front cover matboard: 5" x 4 3/4"
 Front spine piece matboard: 5" x 1"
 Back piece matboard: 6" x 5"
 Inside front cover cardstock: 6" x 5"
 Inside blank pages cardstock: 5 3/4" x 4 3/4" score @ 1" from left side

2-4-6-8 Box

Cut 8 1/2" x 5 1/2" piece cardstock
 Score at 2", 4", 6" and 8" along the 8 1/2" side.
 Turn 90 degrees (5 1/2" side of cardstock will be against bottom lip of paper cutter) and score at 2" along the entire length of the cardstock.



Altoid Tin Topper (Regular size)

Bottom layer: 3 1/2 x 2 x 3/16 (or 3 1/2 x 2 1/8 to leave color edge of tin showing)
 2nd layer: 3 1/4 x 2
 3rd (top) layer: 3 1/16 x 1 1/8
 USE LARGE CORNER ROUNDER PUNCH FOR CORNERS