

Quick and easy

# GIFT CARDS

Gift  
Cards



## SIX SQUARE GIFT CARDS FROM ONE SHEET OF CARD-STOCK

A bit of masking, stamping, and scoring, plus a few very simple cuts provide the bases for six 2 3/4" square cards. They're so quick, easy, and cute; you'll want to make a batch for every occasion!

Start with a single sheet of 8 1/2" x 11" card-stock. Cut 1/4" inch off the width, leaving a sheet 8 1/4" x 11". Score across the card-stock 2 3/4" from the top and from the bottom.

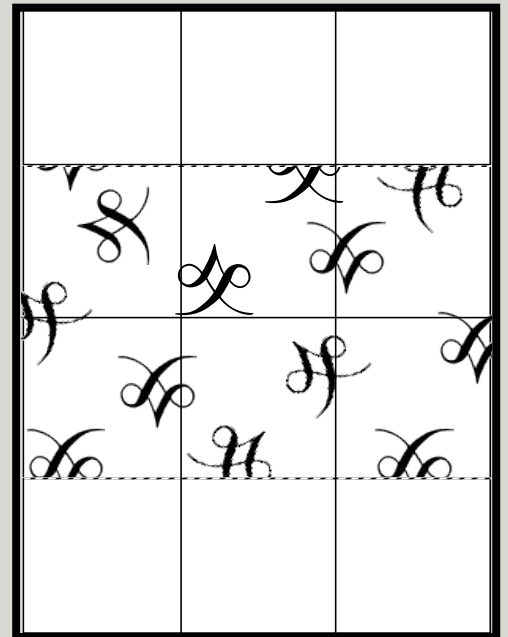
Mask the top and bottom of the card to the score lines. Using a rainbow ink pad or multiple colors, randomly stamp images between the masks, being sure to stamp off the edges and onto the masks. Be random; make sure the images are stamped right side up, upside down, sideways. Try not to make an obvious pattern with the images. This is the same as the One Sheet Wonder technique, but only on the center portion of the sheet.

When you're done stamping, cut the sheet in half, making two 8 1/4" x 5 1/2" pieces. Next, cut each of the two pieces in thirds, making a total of six pieces, 2 3/4" x 5 1/2". Fold and crease each of the pieces on the score lines.

The cards can be used just as they are, or they can be embellished with layers of card stock, ribbons, buttons, or bows.

Check out the template on the next page to make envelopes for your cards.

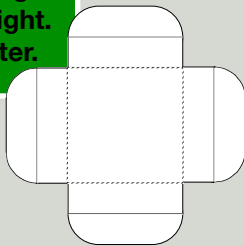
Have fun!



# ENVELOPE TEMPLATE

Make  
a 3" square  
envelope

Another option for an envelope is a square petal card. Start with a square 6" x 6". Cut squares 1 1/2" from each corner. Corner round the tabs that extend. Fold the tabs in, tucking the edge under the one to its right. Add a seal to the center.



## Cut, score, fold, glue.

You should be able to get at least two envelopes out of a sheet of paper. Use text-weight paper in white, or use a coordinating or contrasting color. Stamp one of your One Sheet images on the finished envelope to tie it all

together.

To make your envelope as special as your card try making it out of vellum or gift wrap.

You can use commercial envelope glue to close the envelope, or

make your own seal. Stamp and cut out an image you've used on your card. Run it through a Xyron to turn it into a sticker. Use it on the tip of the flap to seal the card