

mix it up with color!

If you've ever wondered which colors look best together, the Color Coach® has been there to help. But what about Stampin' Up!'s In Colors™? These six trendy colors expand your color options and complement our exclusive color families too! Use this chart to help you mix and match In Colors with Bold Brights®, Earth Elements®, Rich Regals®, Soft Subtles®, and Neutrals, and find the perfect color combination every time!

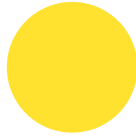
| | | | | | | | |
|---|--|--|--|--|--|---|--|
|  cool caribbean |  certainly celery |  real red |  not quite navy |  cool caribbean |  pumpkin pie |  old olive |  real red |
|  cool caribbean |  green galore |  apricot appeal |  rose red |  cool caribbean |  marigold morning |  old olive |  cameo coral |
|  cool caribbean |  certainly celery |  bashful blue |  pretty in pink |  cool caribbean |  vintage violet |  really rust |  true thyme |
|  cool caribbean |  regal rose |  so saffron |  certainly celery |  cool caribbean |  vintage violet |  ruby red |  chocolate chip |
|  cool caribbean |  chocolate chip |  sahara sand |  old olive |  cool caribbean |  real red |  old olive |  tempting turquoise |



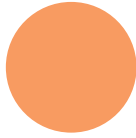
cool
caribbean



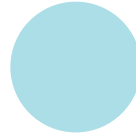
green
galore



summer
sun



only
orange



cool
caribbean



true
thyme



rose
red



certainly
celery



cool
caribbean



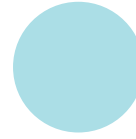
always
artichoke



certainly
celery



so
saffron



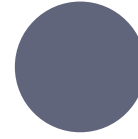
cool
caribbean



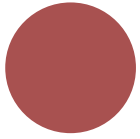
sage
shadow



rose
red



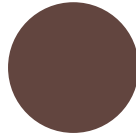
vintage
violet



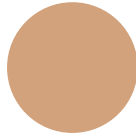
cranberry
crisp



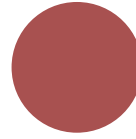
sage
shadow



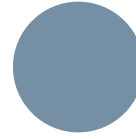
chocolate
chip



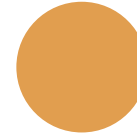
creamy
caramel



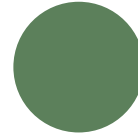
cranberry
crisp



buckaroo
blue



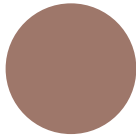
more
mustard



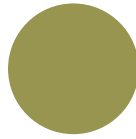
garden
green



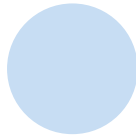
cranberry
crisp



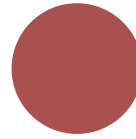
close to
cocoa



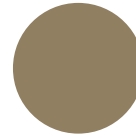
old
olive



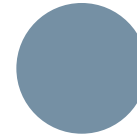
bashful
blue



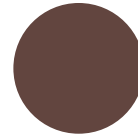
cranberry
crisp



true
thyme



buckaroo
blue



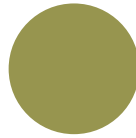
chocolate
chip



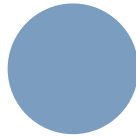
cranberry
crisp



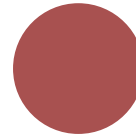
pumpkin
pie



old
olive



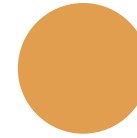
brocade
blue



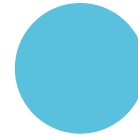
cranberry
crisp



true
thyme



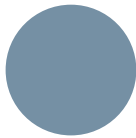
more
mustard



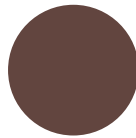
tempting
turquoise



cranberry
crisp



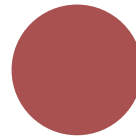
buckaroo
blue



chocolate
chip



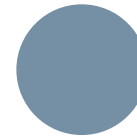
sahara
sand



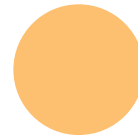
cranberry
crisp



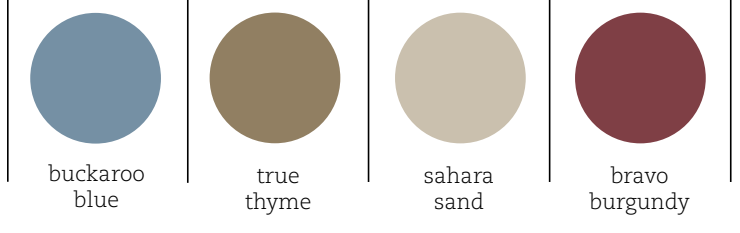
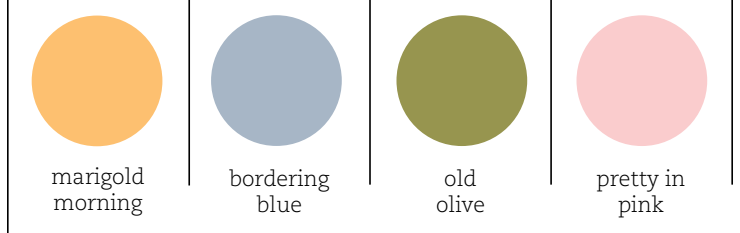
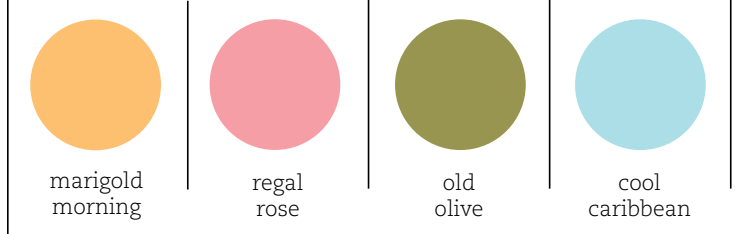
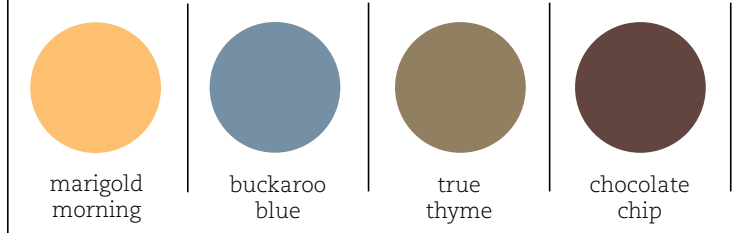
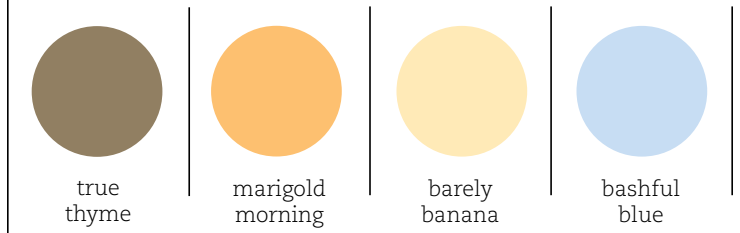
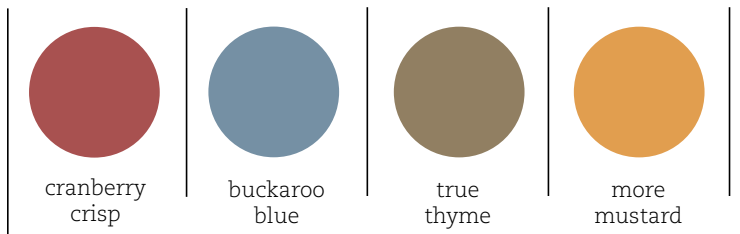
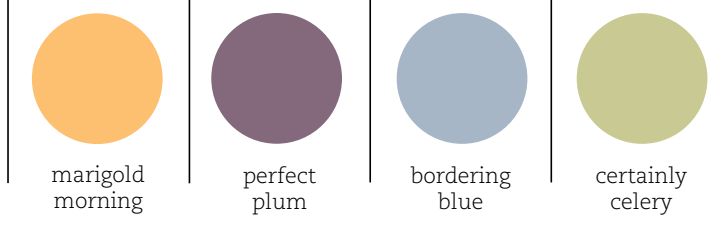
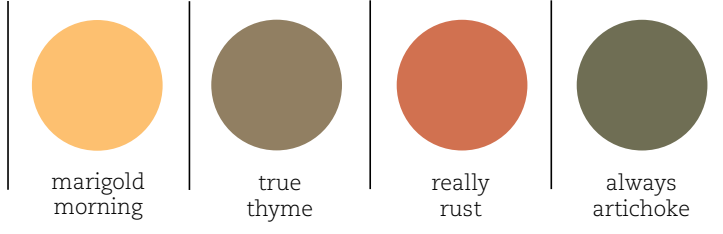
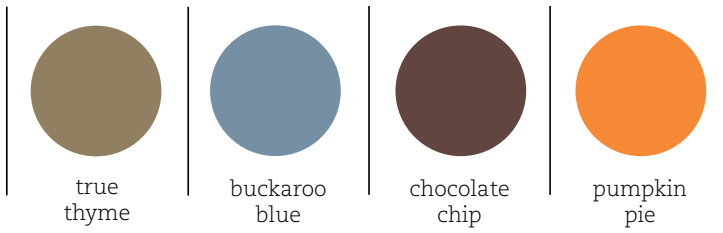
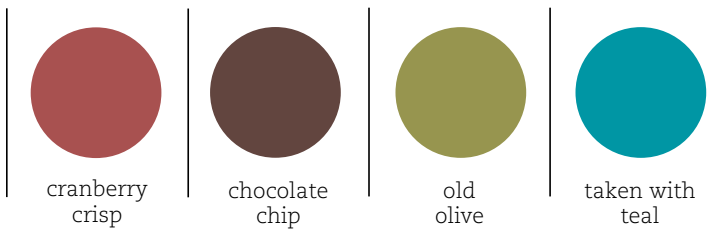
true
thyme

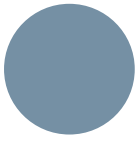


buckaroo
blue

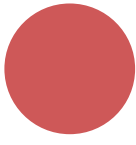


marigold
morning





buckaroo blue



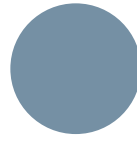
ruby red



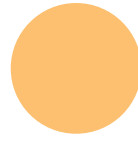
mellow moss



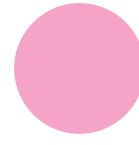
sahara sand



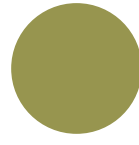
buckaroo blue



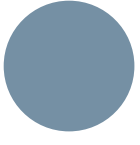
marigold morning



pixie pink



old olive



buckaroo blue



chocolate chip



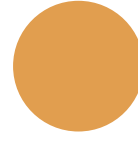
bravo burgundy



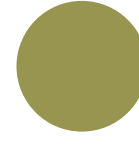
not quite navy



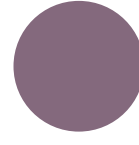
buckaroo blue



more mustard



old olive



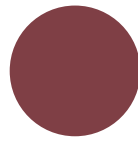
perfect plum



vintage violet



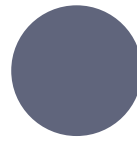
old olive



bravo burgundy



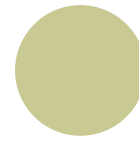
always artichoke



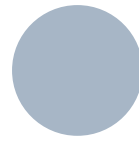
vintage violet



sage shadow



certainly celery



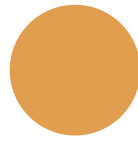
bordering blue



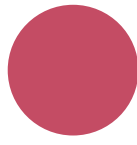
vintage violet



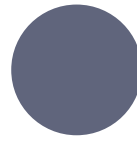
true thyme



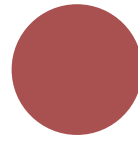
more mustard



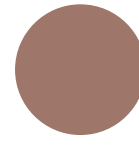
rose red



vintage violet



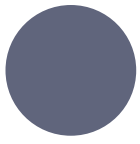
cranberry crisp



close to cocoa



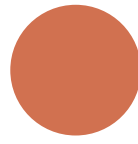
mellow moss



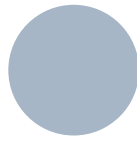
vintage violet



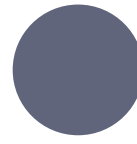
mellow moss



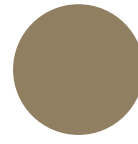
really rust



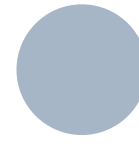
bordering blue



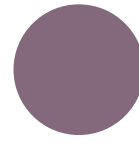
vintage violet



true thyme



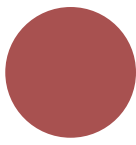
bordering blue



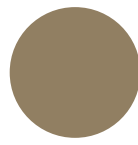
perfect plum



vintage violet



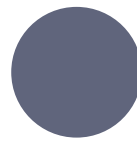
cranberry crisp



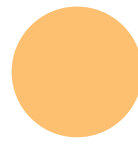
true thyme



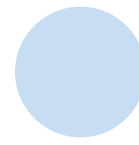
sage shadow



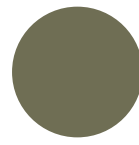
vintage violet



marigold morning



bashful blue



always artichoke