

mix it up with color!

If you've ever wondered which colors look best together, the Color Coach® has been there to help. But what about Stampin' Up!'s In Colors™? These six trendy colors expand your color options and complement our exclusive color families too! Use this chart to help you mix and match In Colors with Bold Brights®, Earth Elements®, Rich Regals®, Soft Subtles®, and Neutrals, and find the perfect color combination every time!

							
purely pomegranate	pumpkin pie	bashful blue	old olive	purely pomegranate	blue bayou	mellow moss	river rock
							
purely pomegranate	river rock	always artichoke	more mustard	purely pomegranate	mellow moss	so saffron	not quite navy
							
purely pomegranate	bashful blue	perfect plum	river rock	purely pomegranate	wild wasabi	soft sky	kraft
							
purely pomegranate	blue bayou	always artichoke	old olive	wild wasabi	blue bayou	real red	soft sky
							
purely pomegranate	pale plum	old olive	bravo burgundy	wild wasabi	river rock	blue bayou	chocolate chip









river
rock



soft
sky



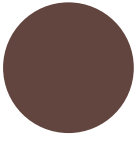
rose
red



chocolate
chip



river
rock



chocolate
chip



pumpkin
pie



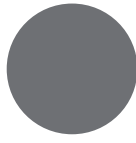
always
artichoke



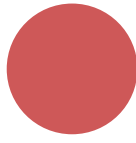
river
rock



mellow
moss



basic
gray



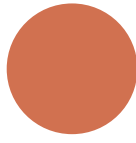
ruby
red



river
rock



blue
bayou



really
rust



kraft